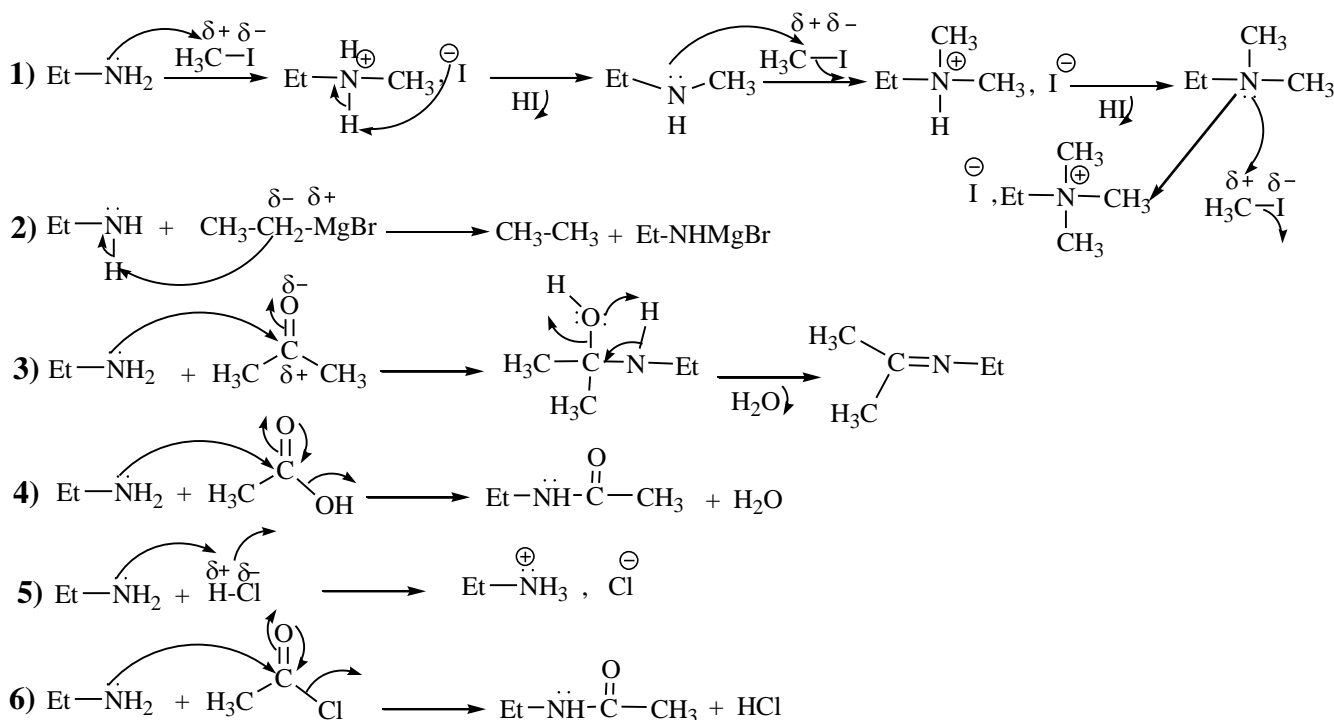
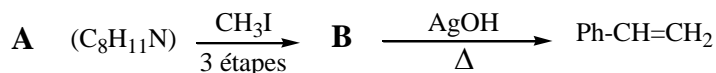


Corrigé type de TD N°11 : Les Amines

Exercice n°01

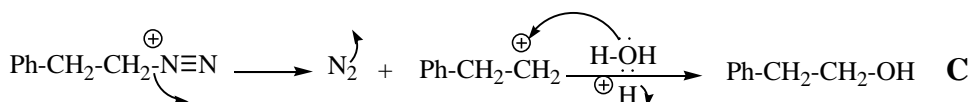
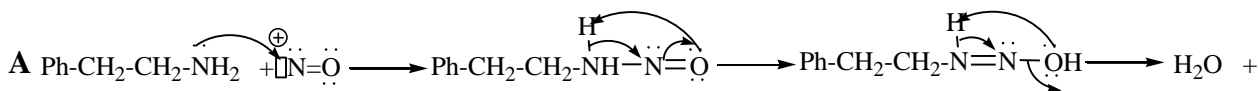
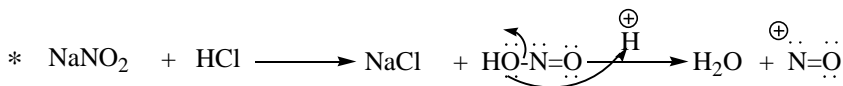
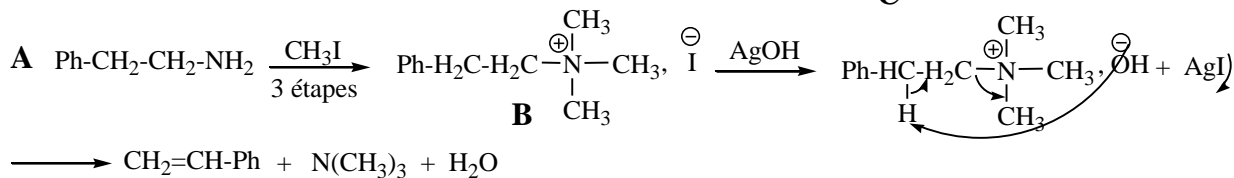
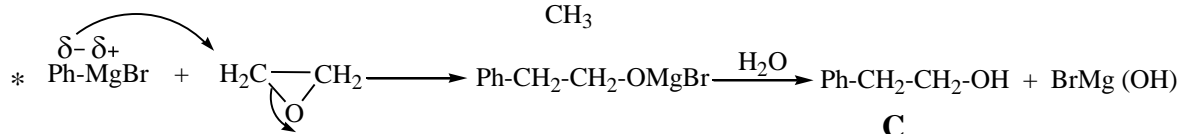


Exercice n°02



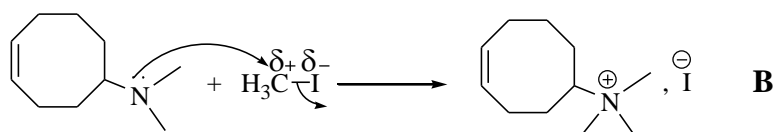
\implies **A** est un amine primaire **B** est un sel d'ammonium quaternaire

\implies **A**: $\text{Ph-CH}_2\text{-CH}_2\text{-NH}_2$ Ou $\text{Ph-CH(CH}_3\text{)-NH}_2$

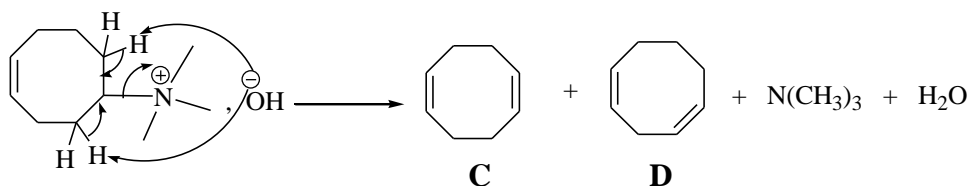


Exercice n°03

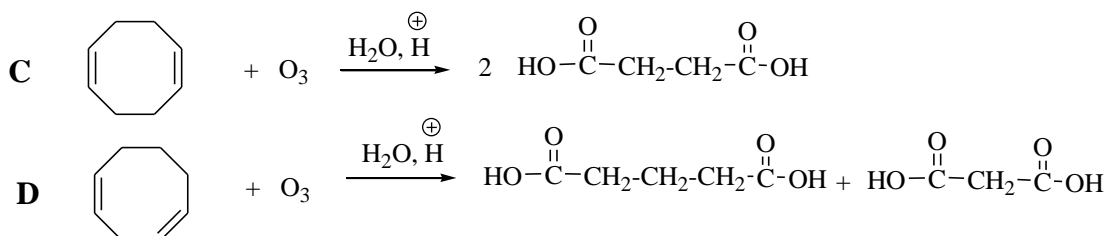
1) La fonction amine est un nucléophile qui attaque le carbone lié à l'iode:



2) l'action de Ag_2O aqueux, précipite l'iodure d'argent très insoluble et associe l'ion ammonium quaternaire à l'anion HO^- qui, lors du chauffage, provoque une élimination d'eau et la formation d'une double liaison dans le cycle (Réaction d'élimination d'Hoffman)

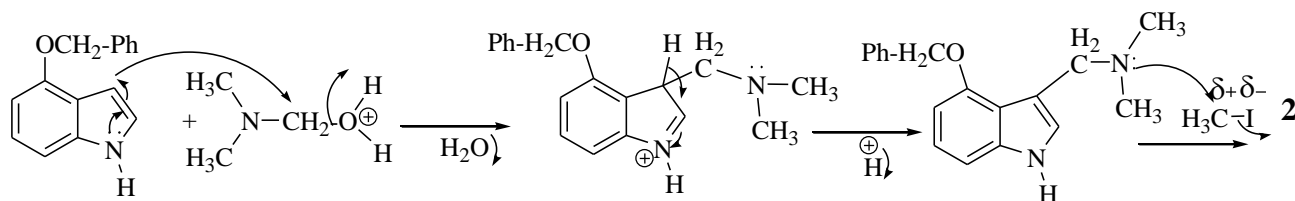
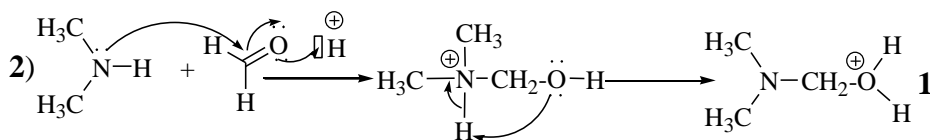
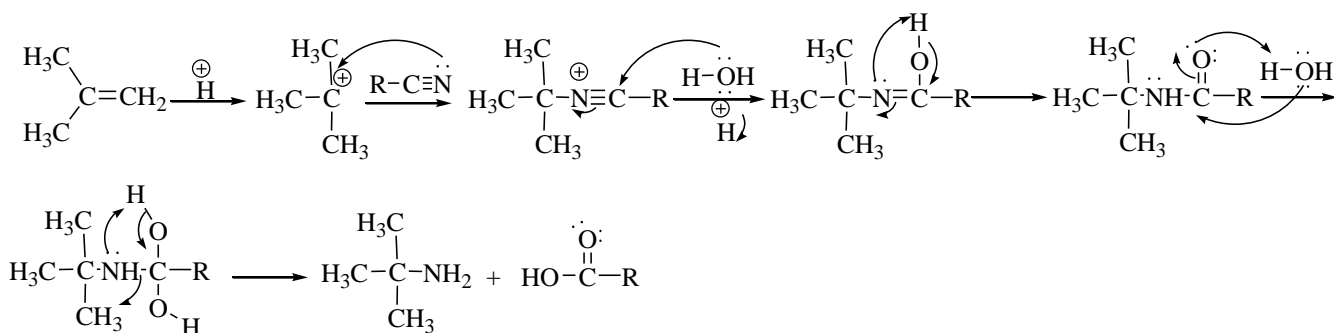


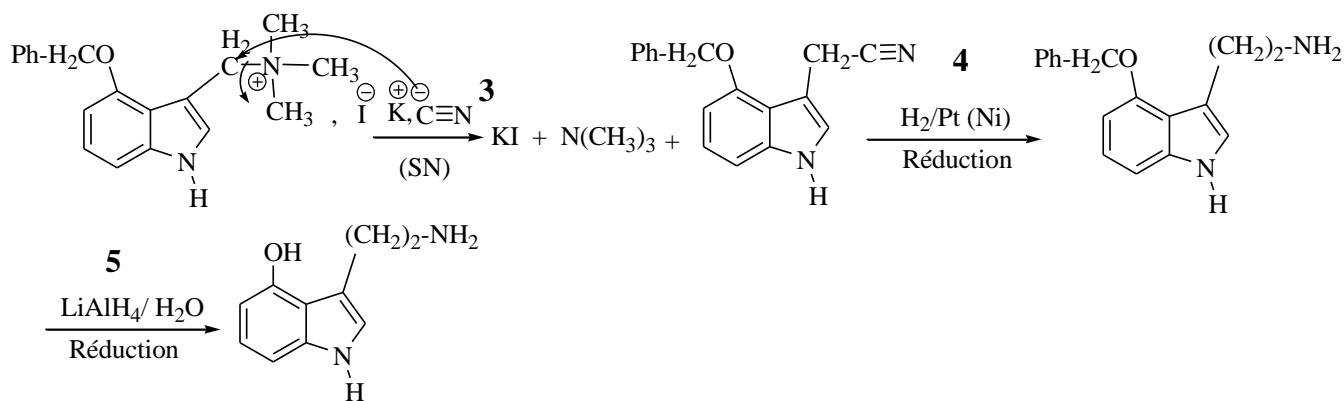
3) Les deux isomères sont identifiés par ozonolyse:



Exercice n°04

1) Réaction de Ritter





Exercice n°05

