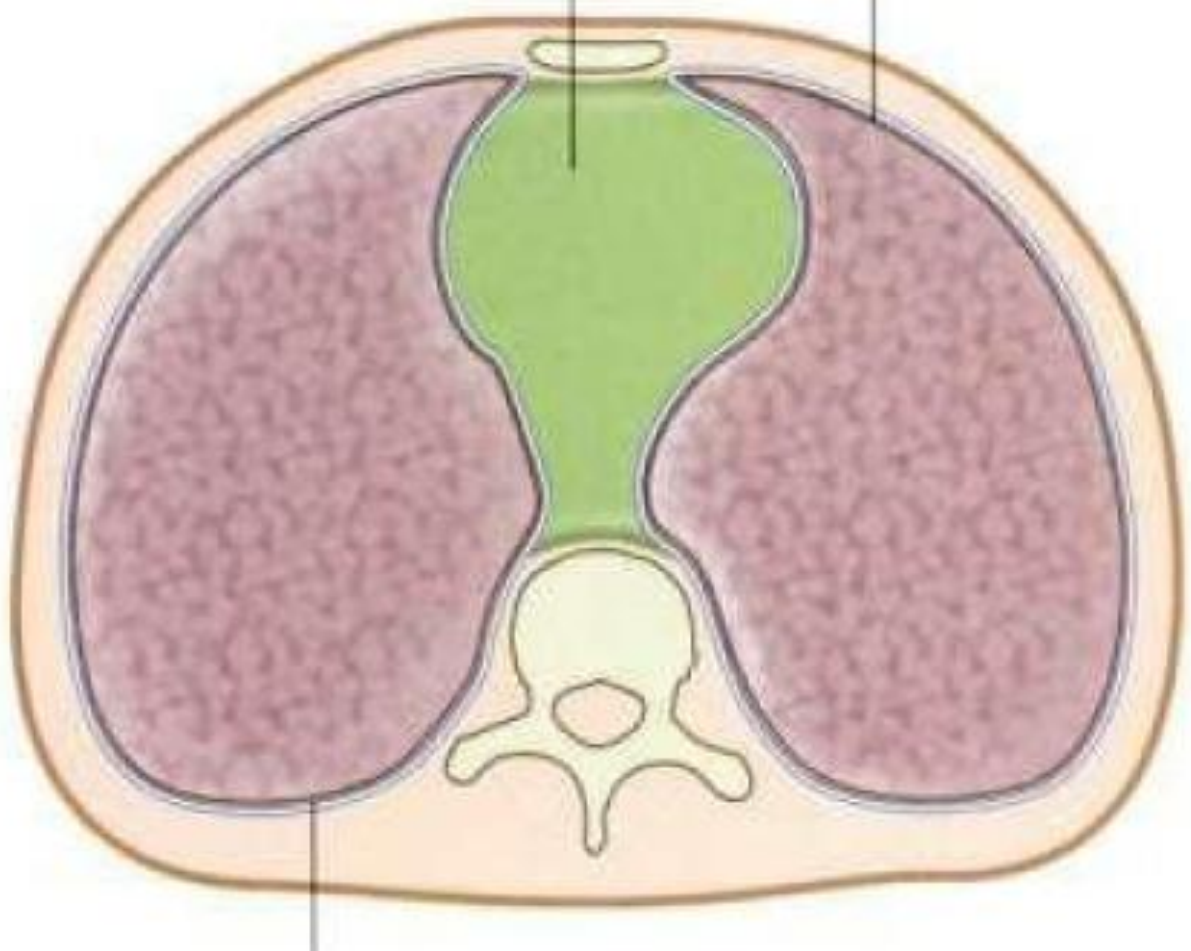
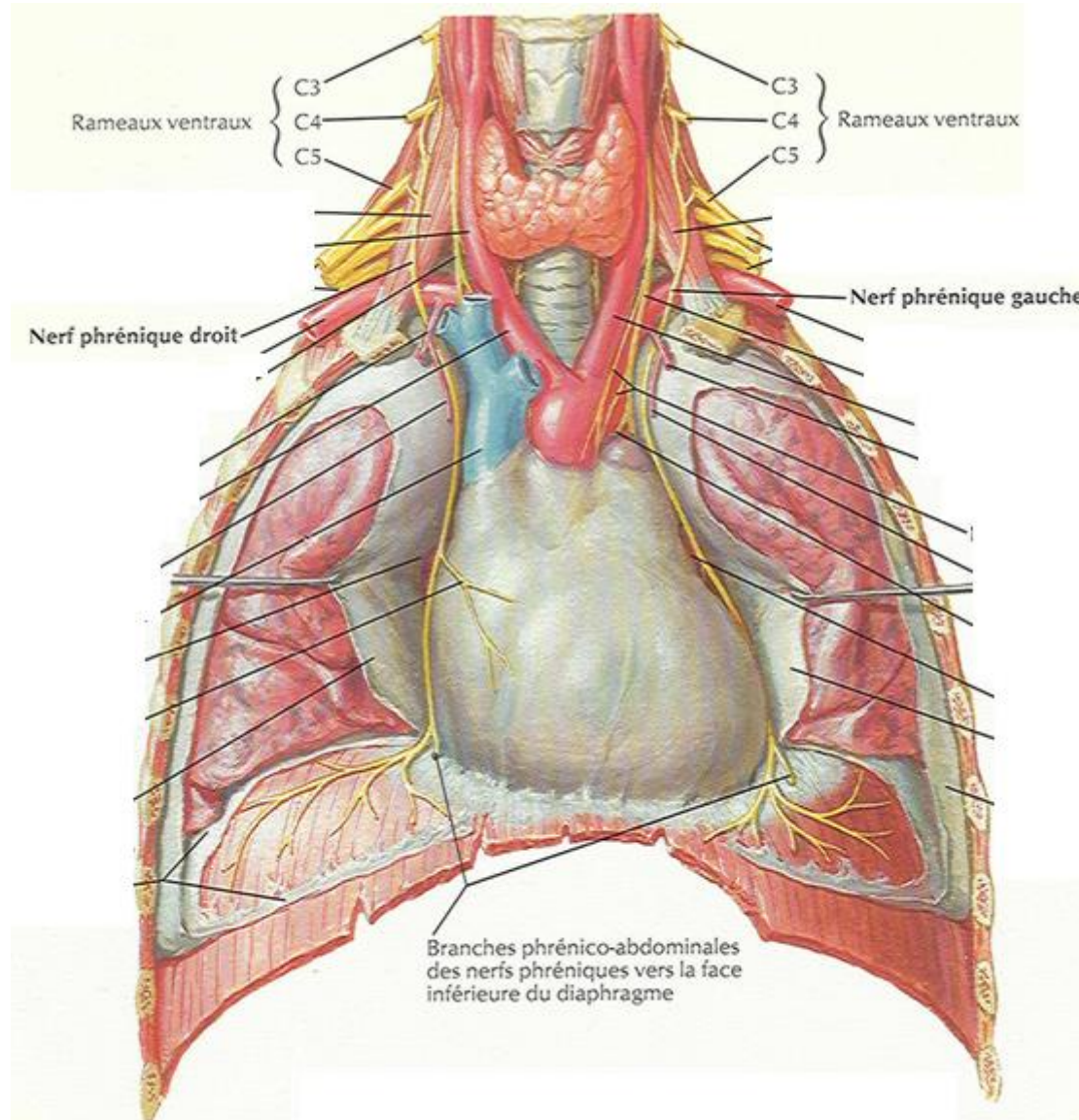


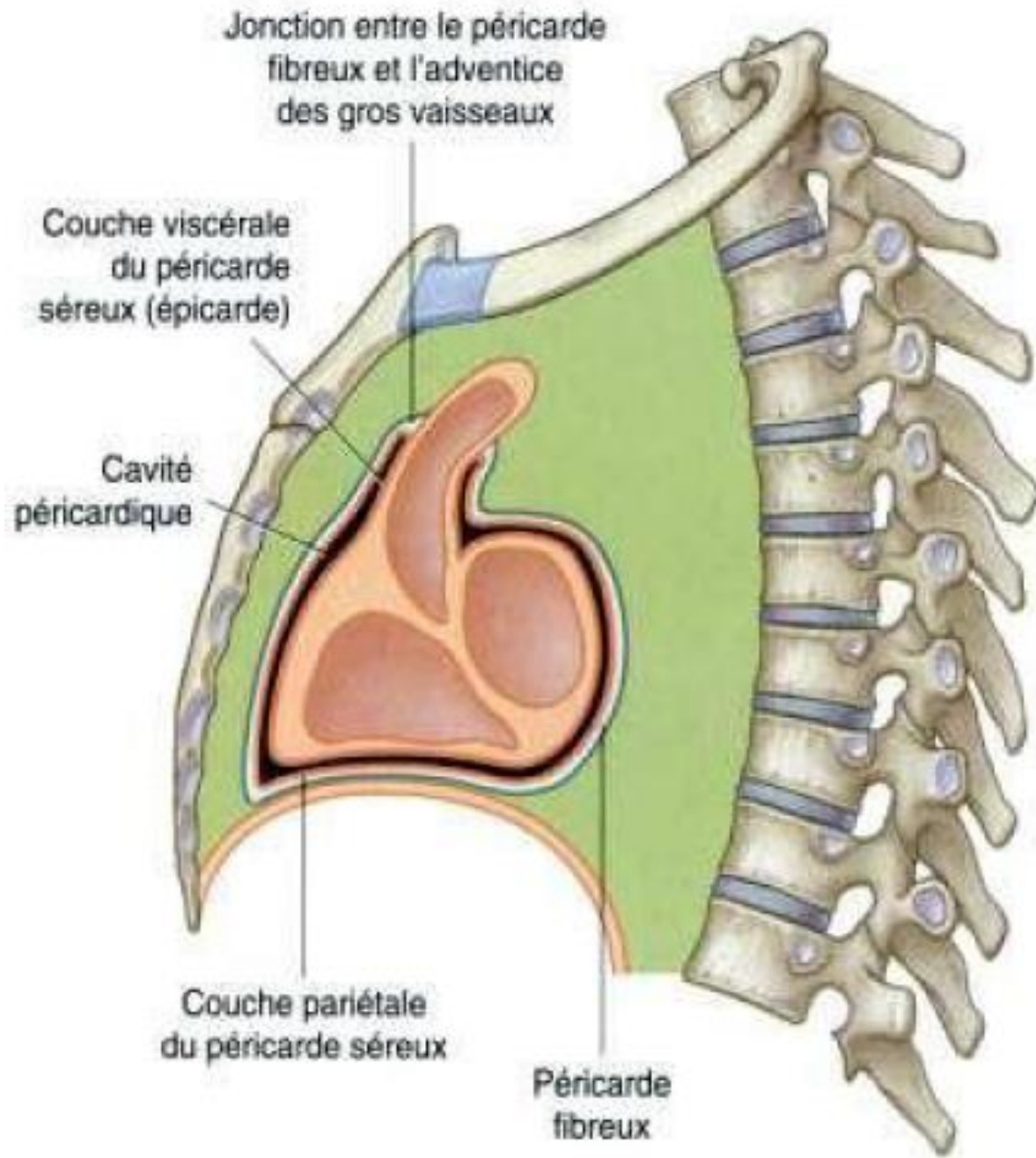
Médiastin

Cavité pleurale gauche





# CŒUR IN SITU

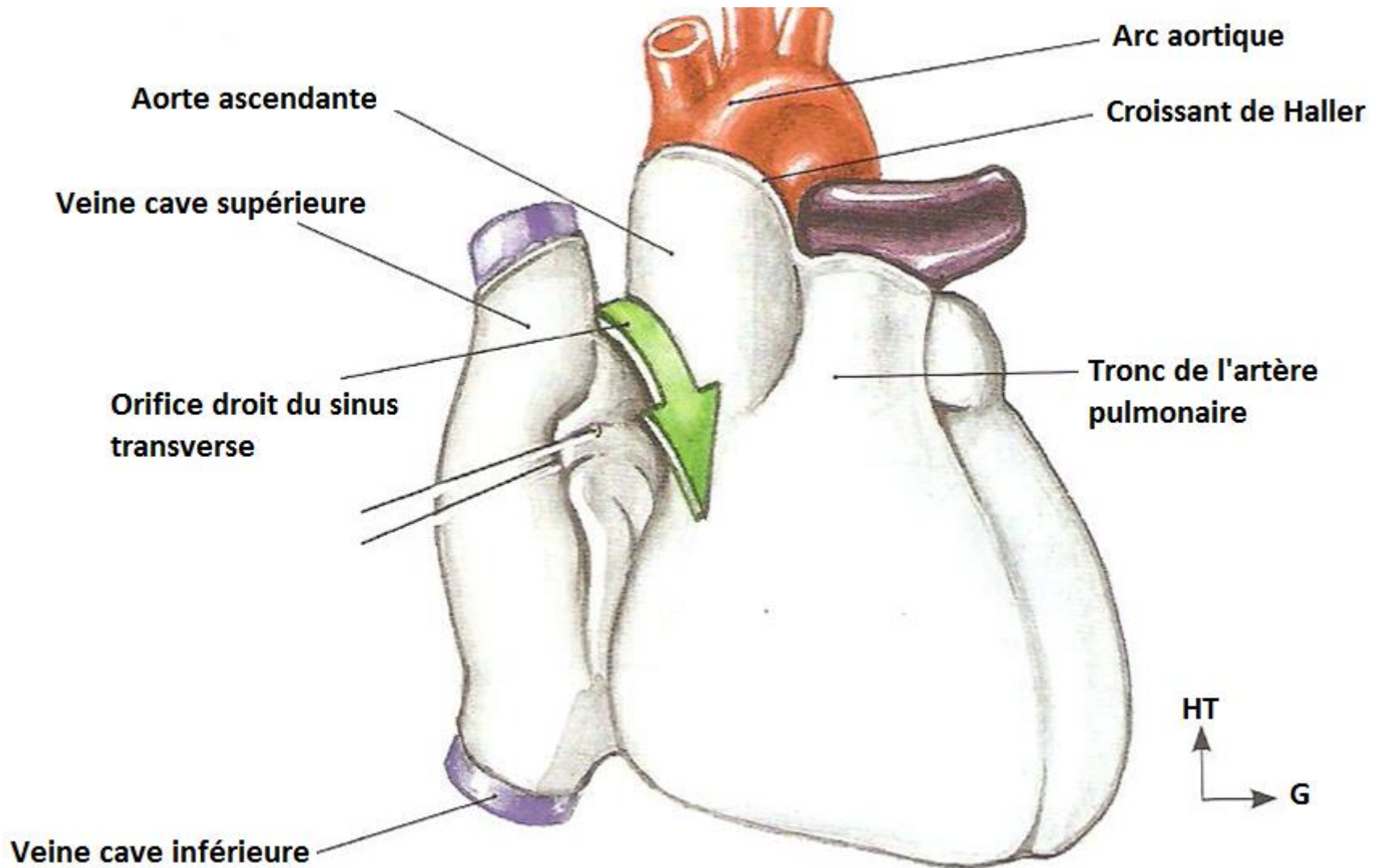


COUPE SAGITTALE DU PERICARDE

# LE PERICARDE SEREUX

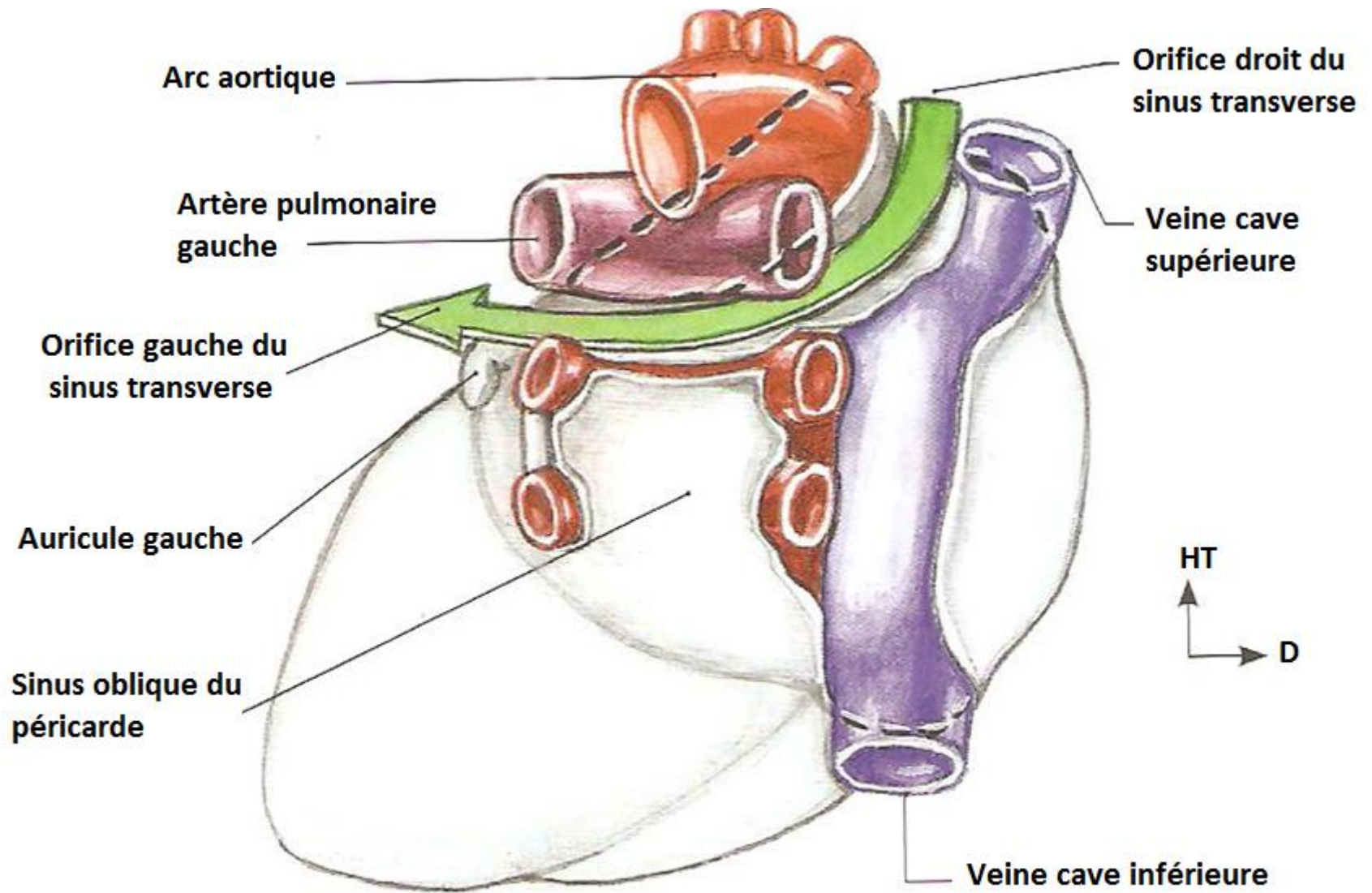


# Péricarde

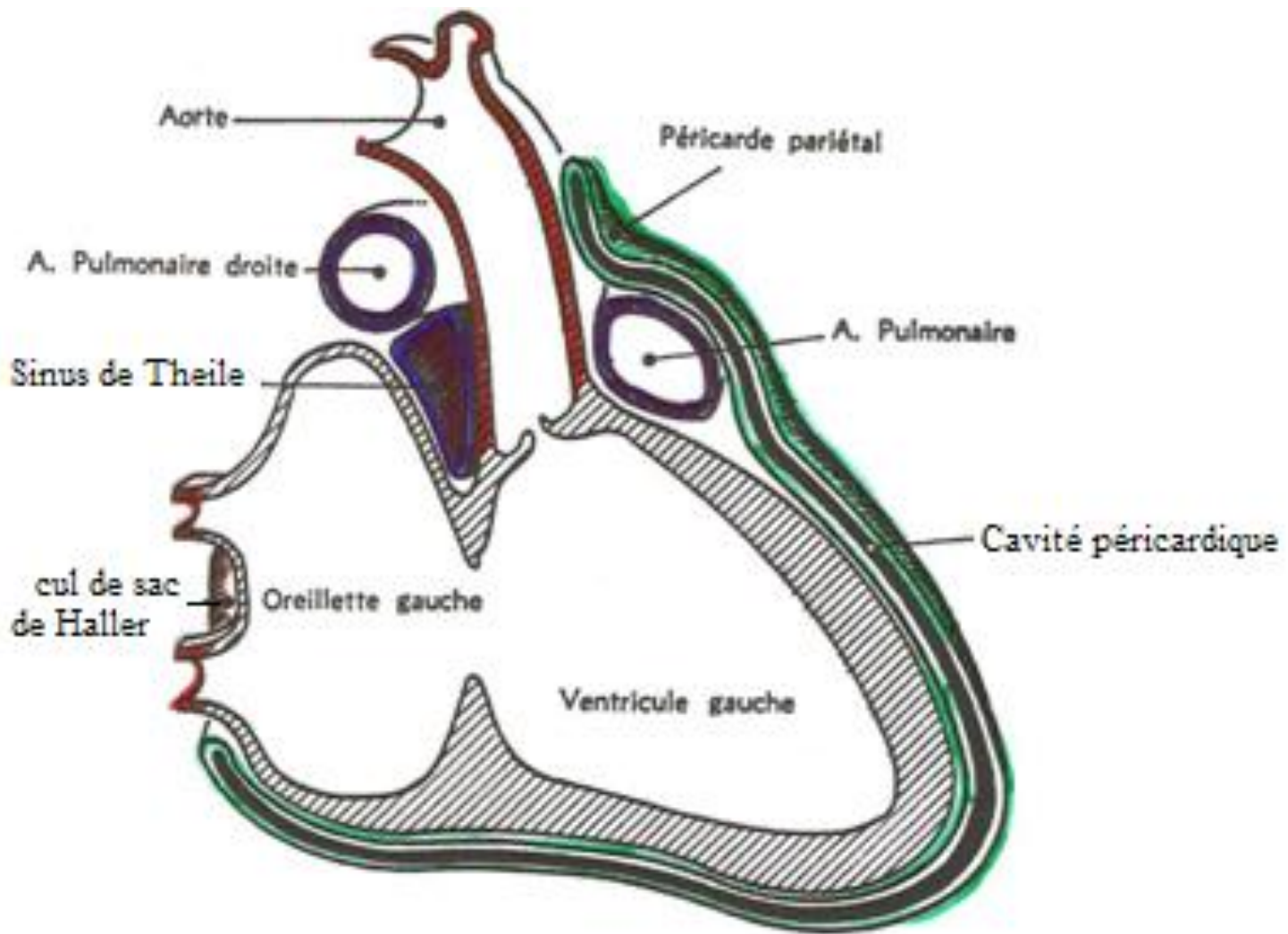


VUE ANTERIEURE

# Péricarde

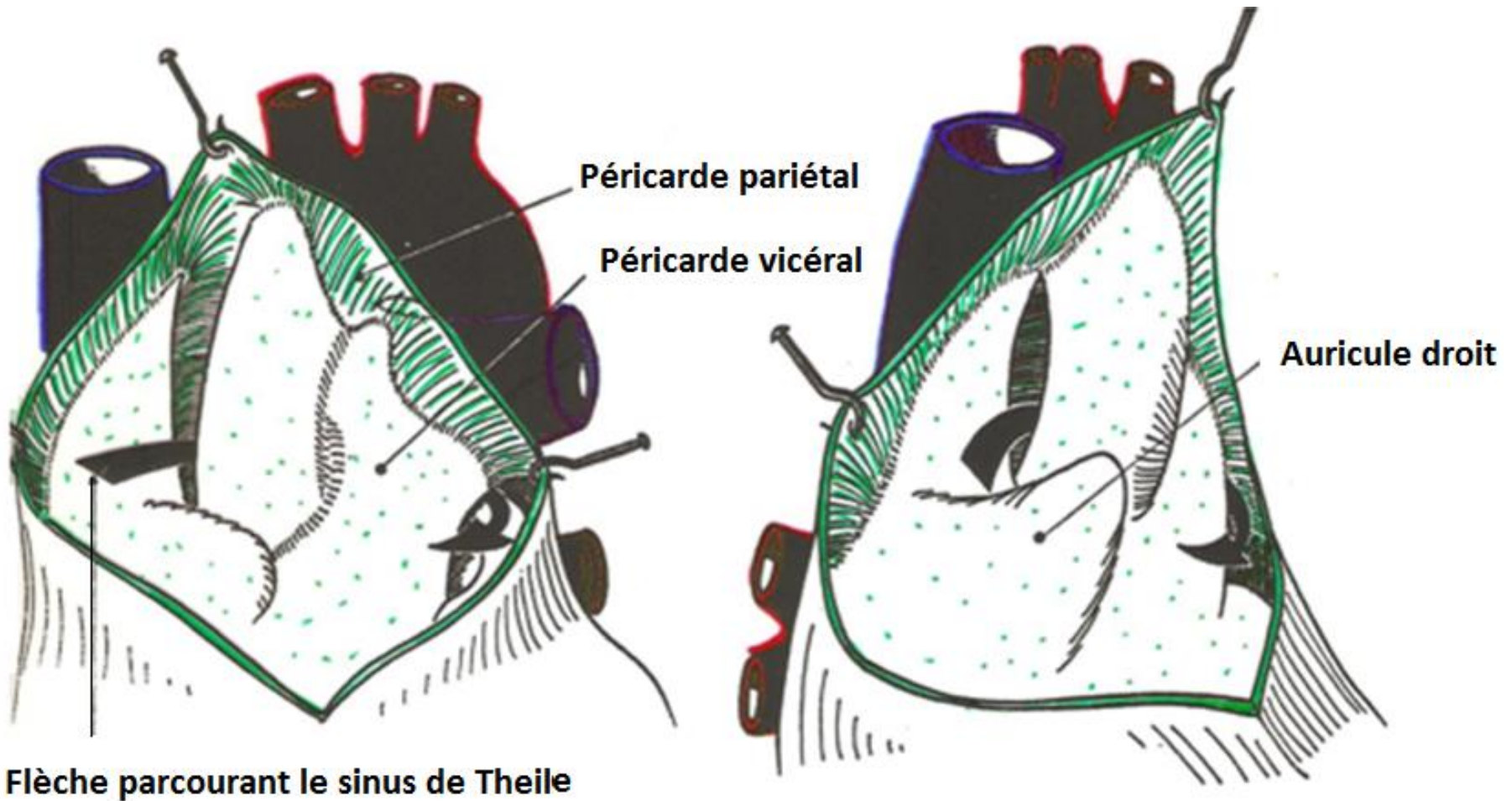


VUE POSTERIEURE



## PERICARDE SEREUX



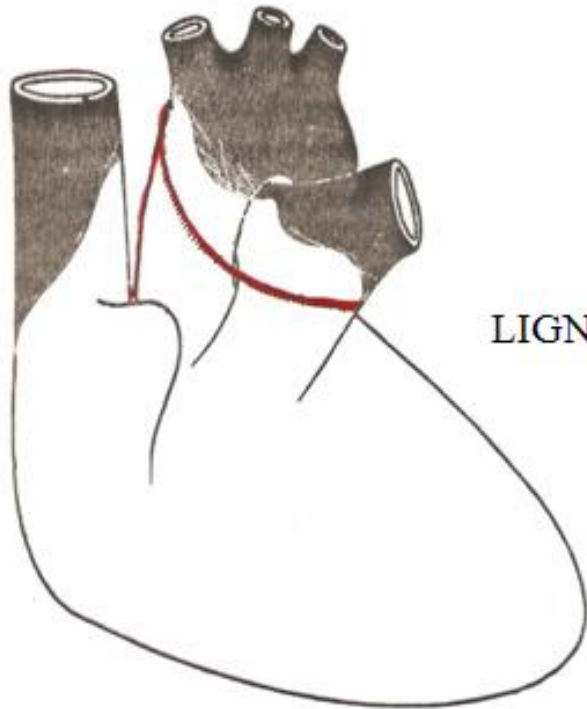


Vue antérieure

Vue latérale droite

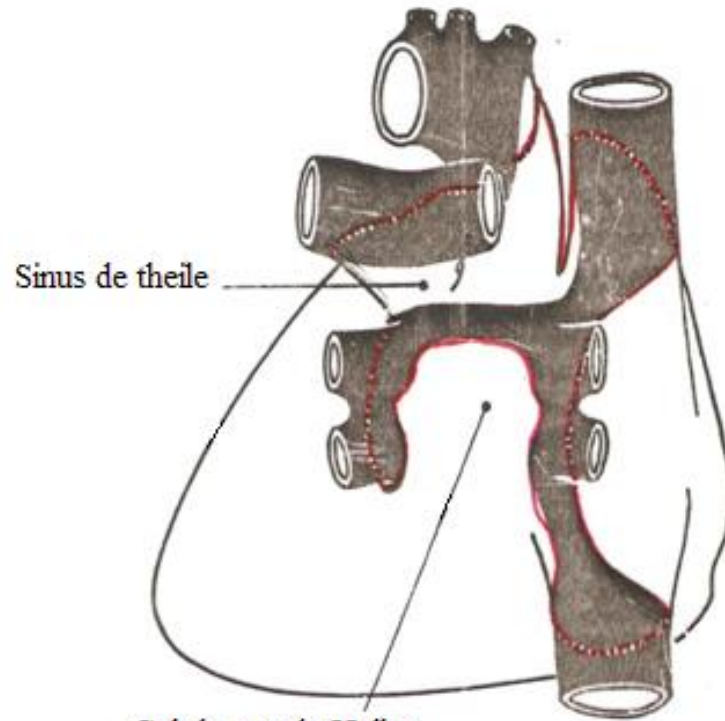
PERICARDE SERREUX ET SINUS DE THEILE





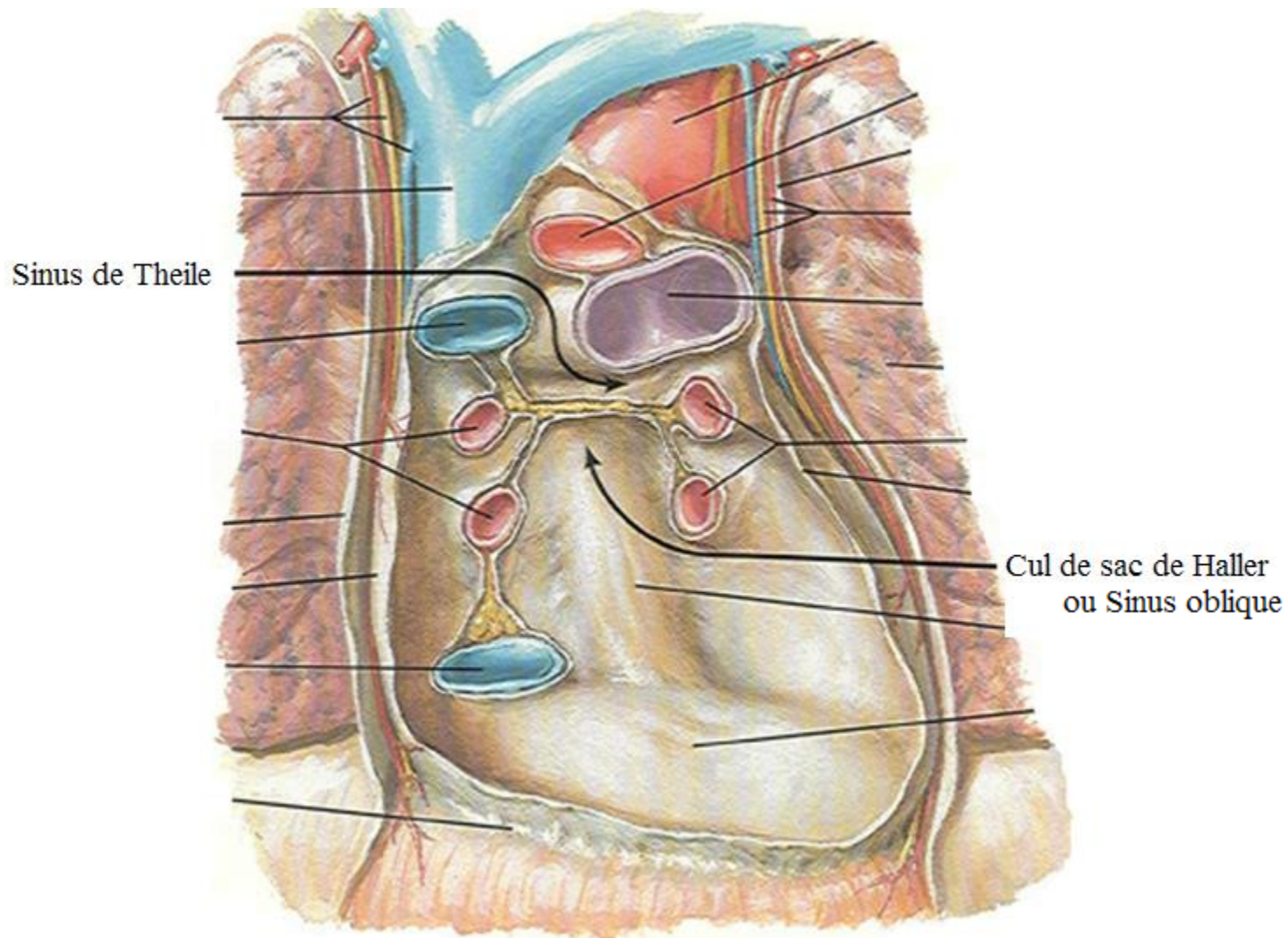
VUE ANTERIEURE

LIGNE DE REFLEXION DU PERICARDE SEREUX

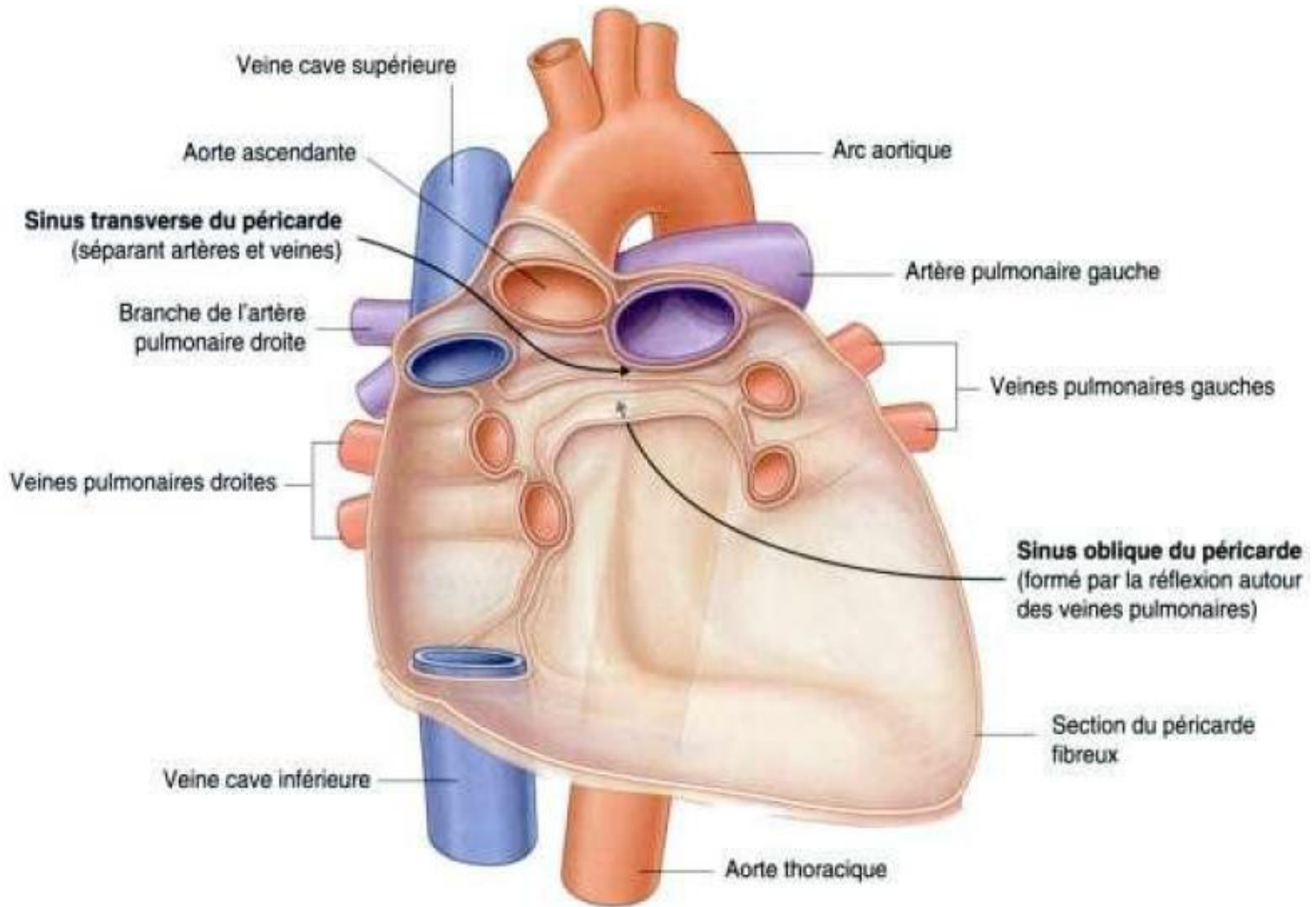


Cul-de-sac de Haller

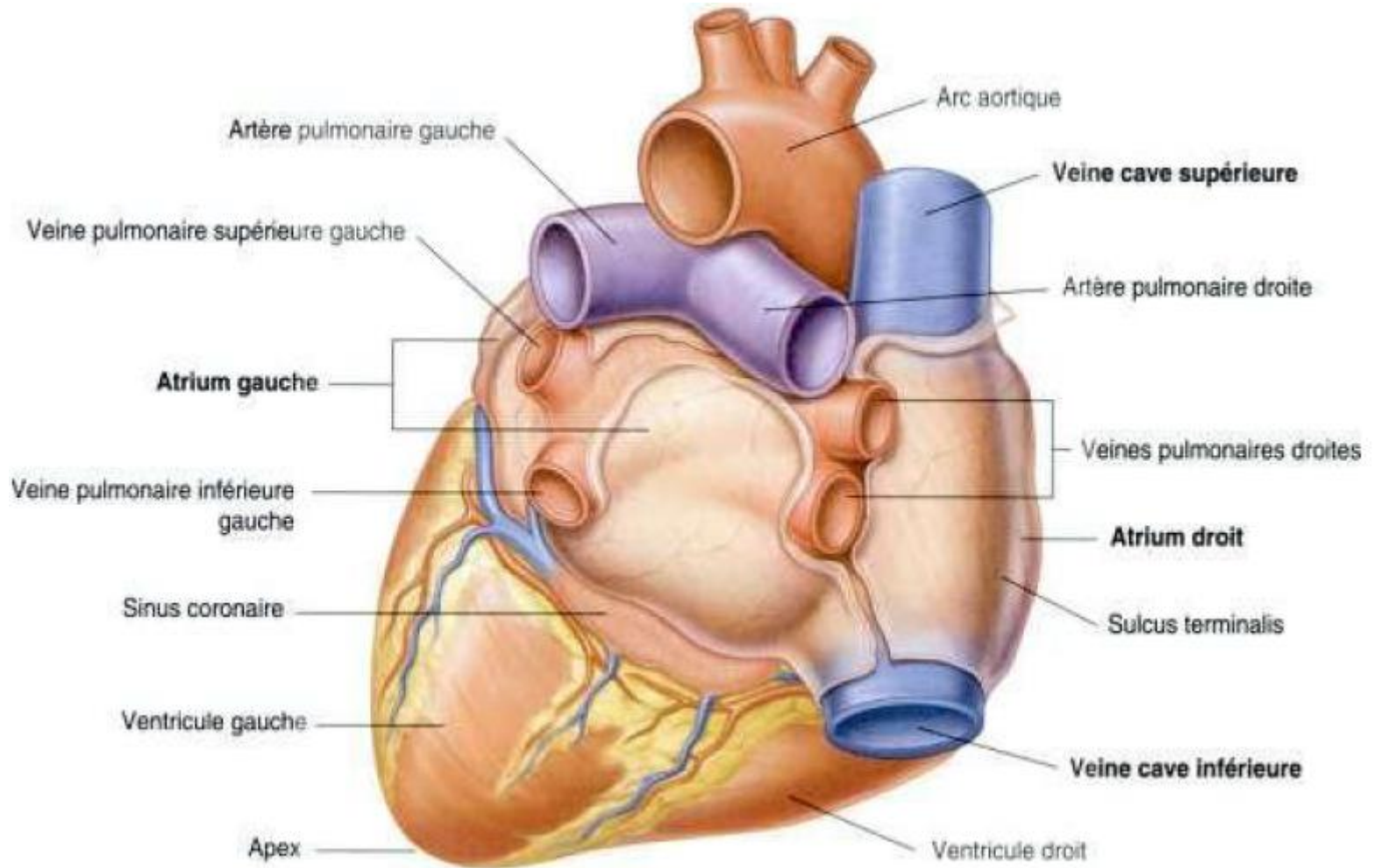
VUE POSTERIEURE



**LIGNE DE REFLEXION DU PERICARDE SEREUX**  
(+ Récessus et cul-de-sac de Haller)

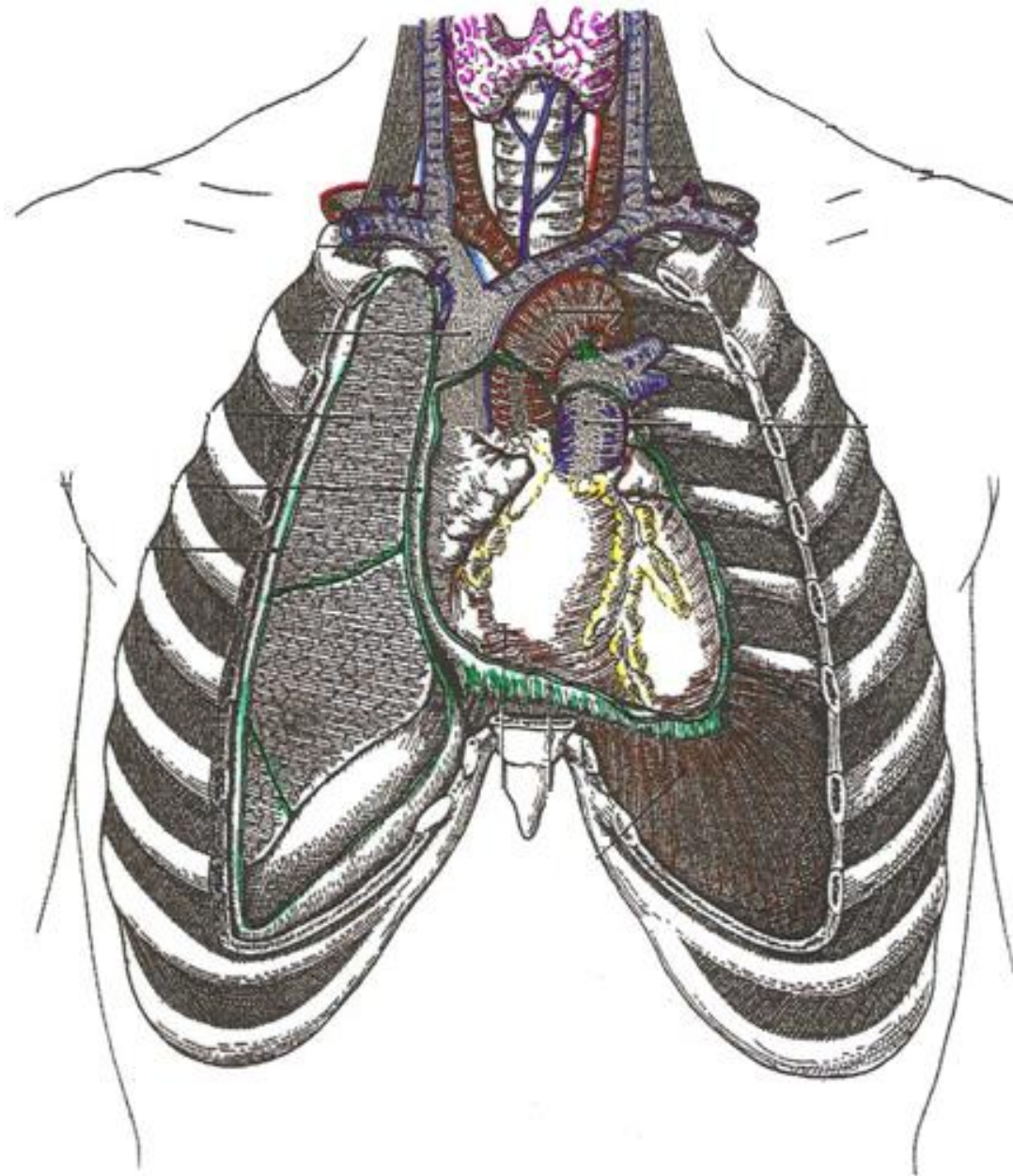


## LIGNES DE REFLEXION DU PERICARDE ET SINUS DE THEILE



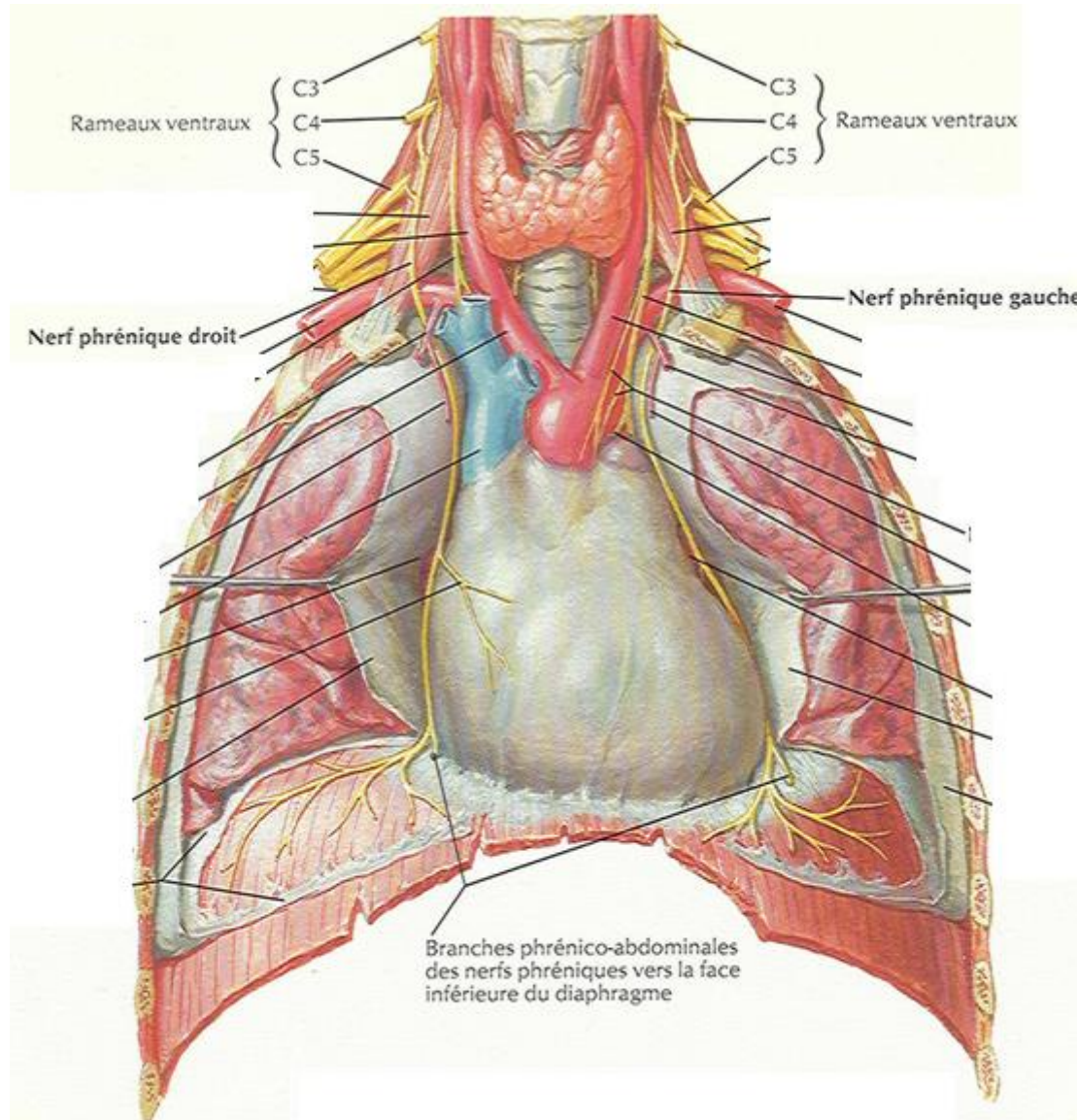
## CUL-DE-SAC DE HALLER



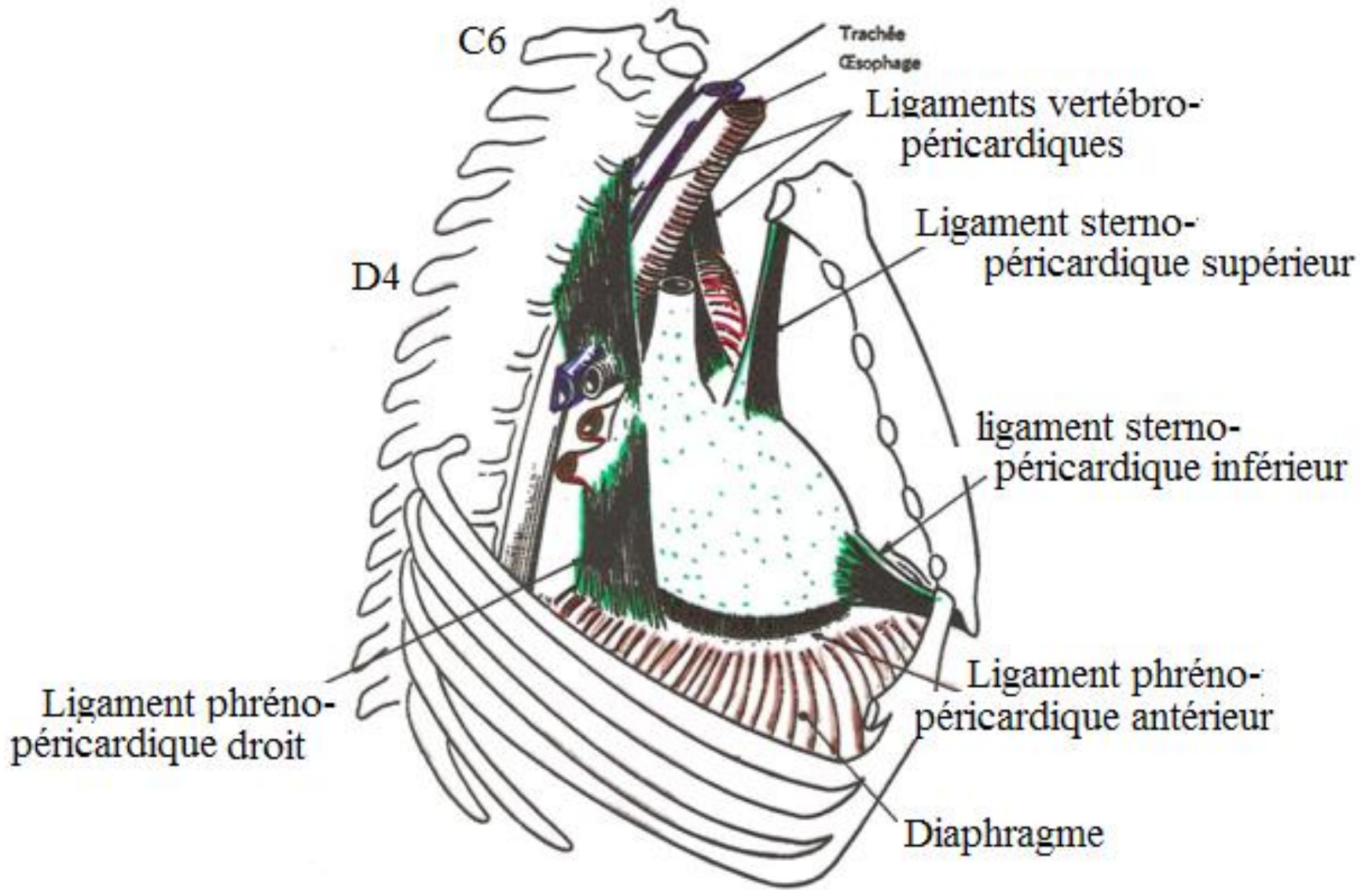


COEUR DANS LE THORAX

# PERICARDE FIBREUX

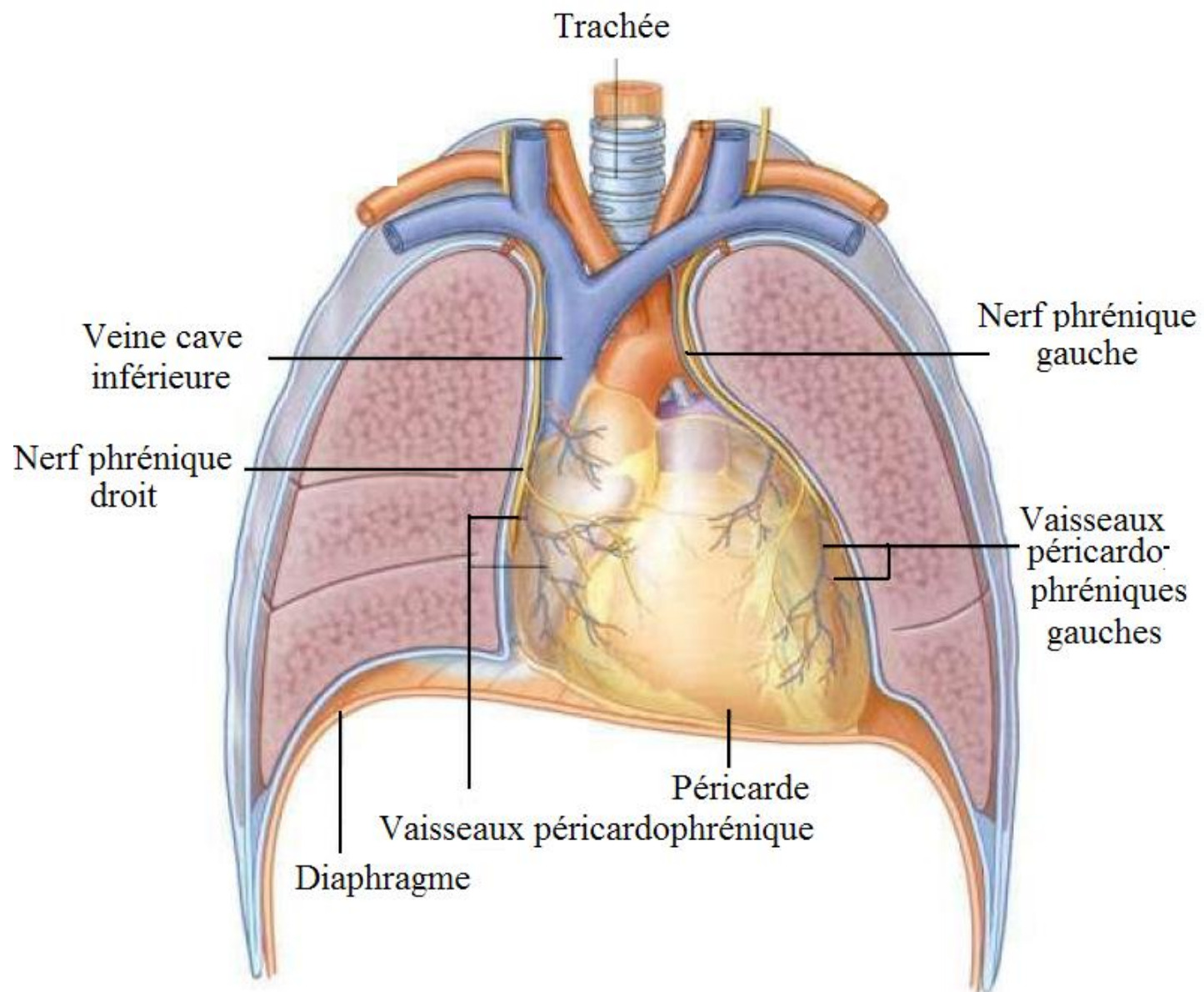


# PERICARDE FIBREUX

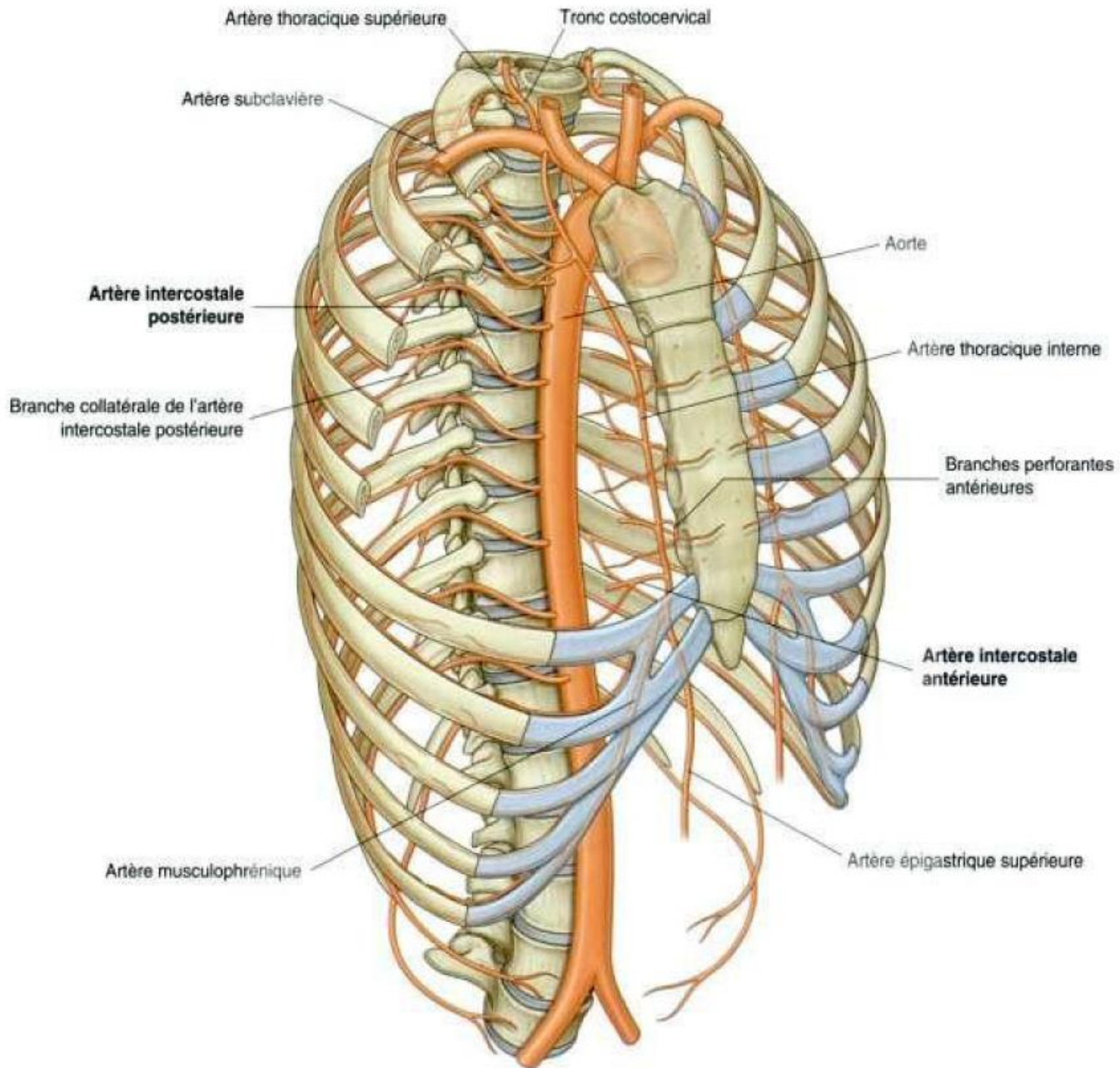


## **PERICARDE FIBREUX**

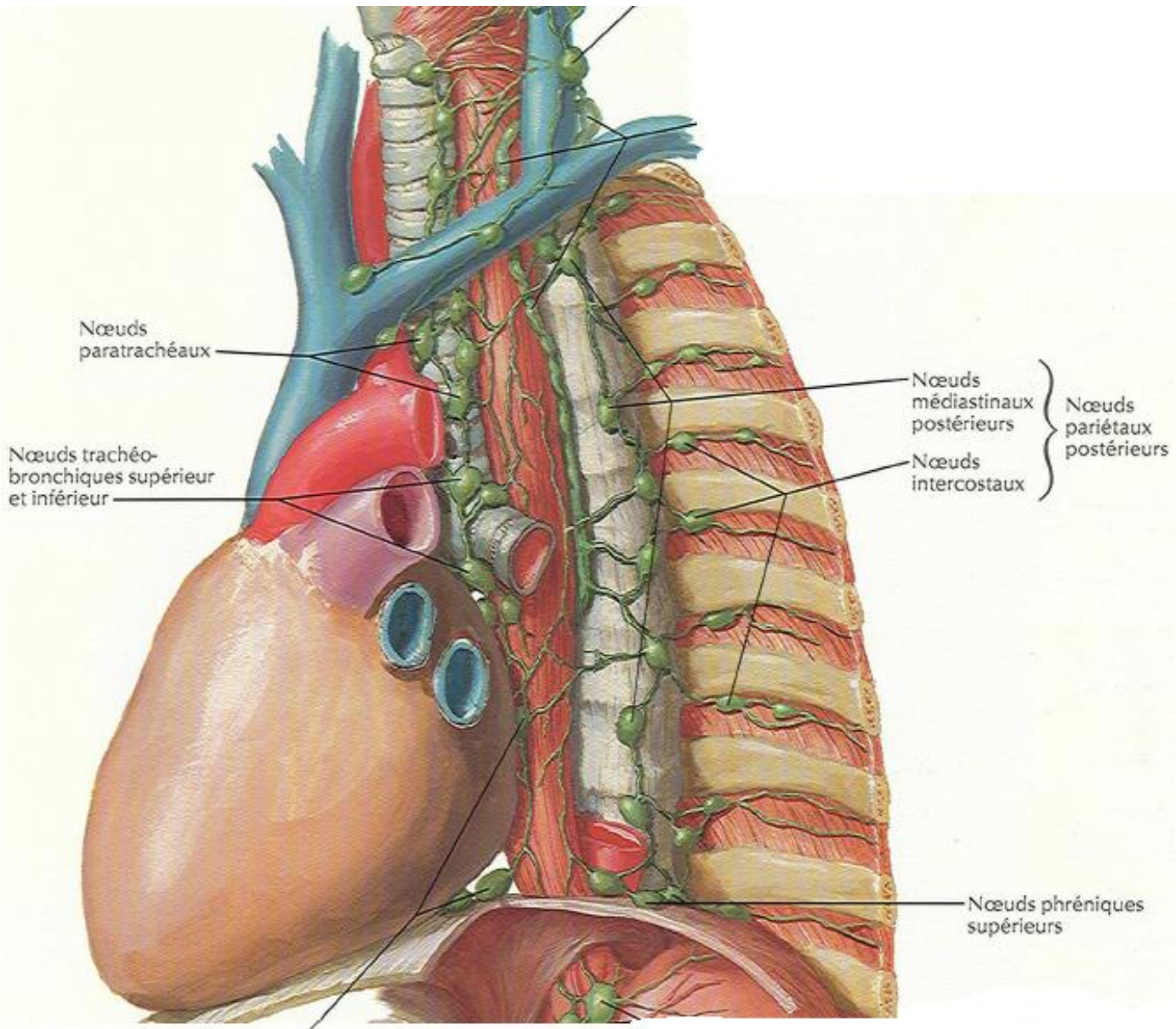




## PERICARDE FIBREUX, RAPPORTS



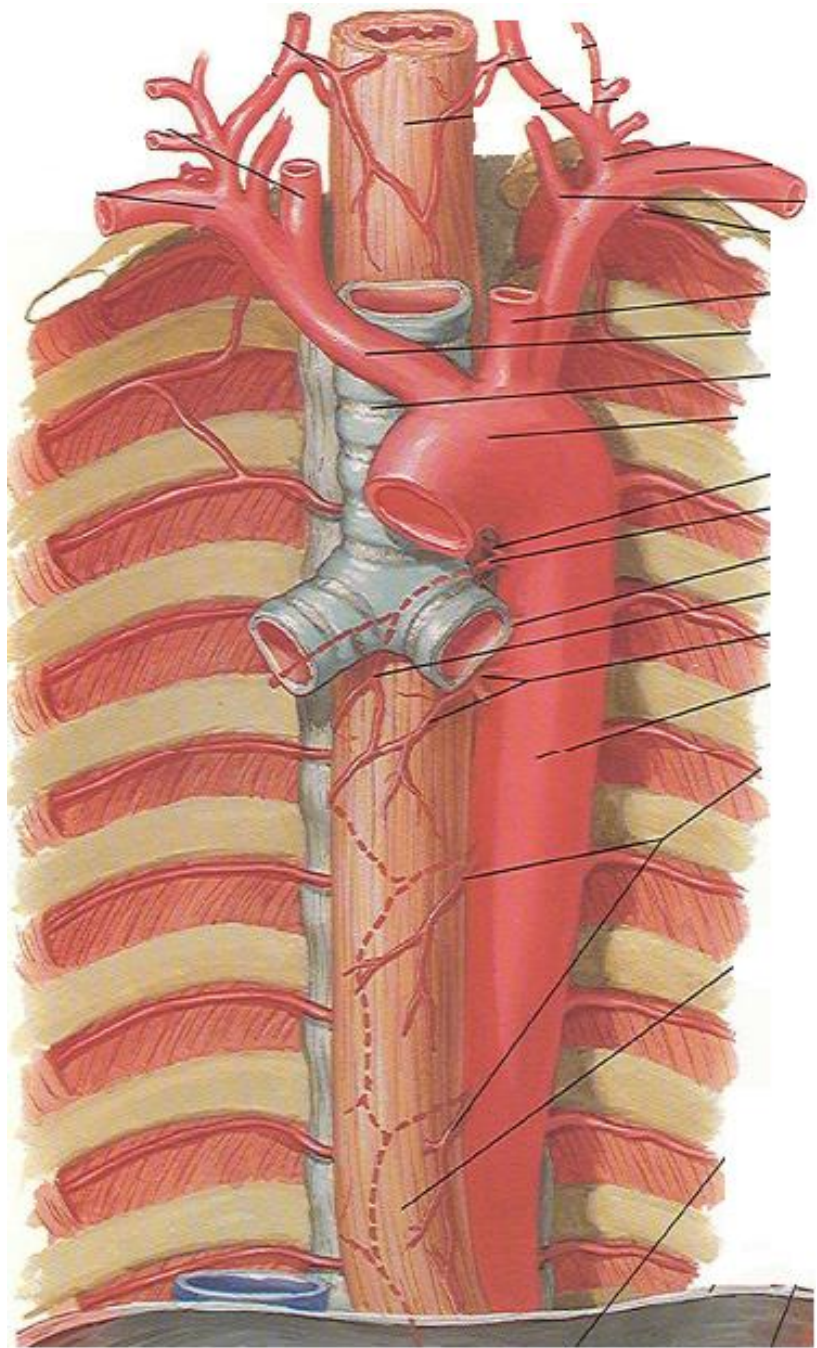
# ARTERES DU PERICARDE



Noeuds juxtaoesophagien et phrénique supérieur

# LYMPHATIQUES DU PERICARDE







# RAPPORTS DU COEUR

