

Section Variables

Créer ou importer des sections de base selon le besoin

Rectangular Section

Section Name: Display Color: ■

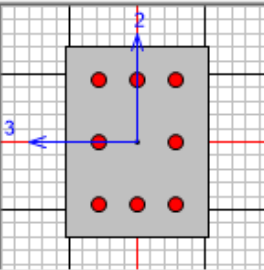
Section Notes:

Dimensions

Depth (t3):

Width (t2):

Section



Properties

Material

Property Modifiers

Rectangular Section

Section Name: Display Color: ■

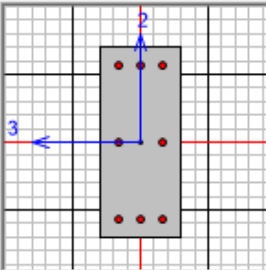
Section Notes:

Dimensions

Depth (t3):

Width (t2):

Section

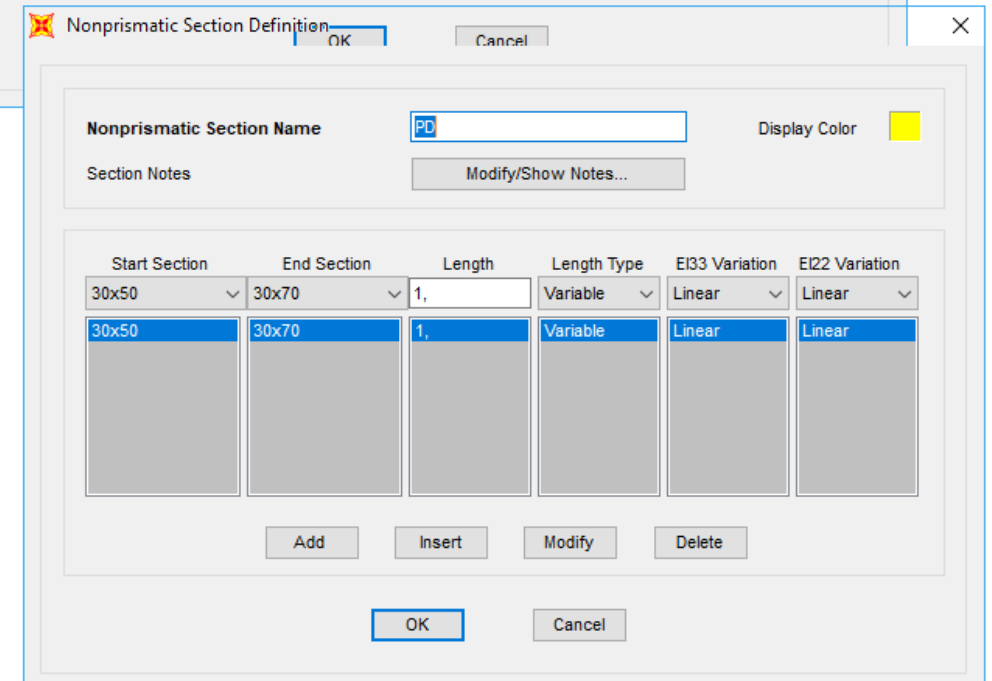
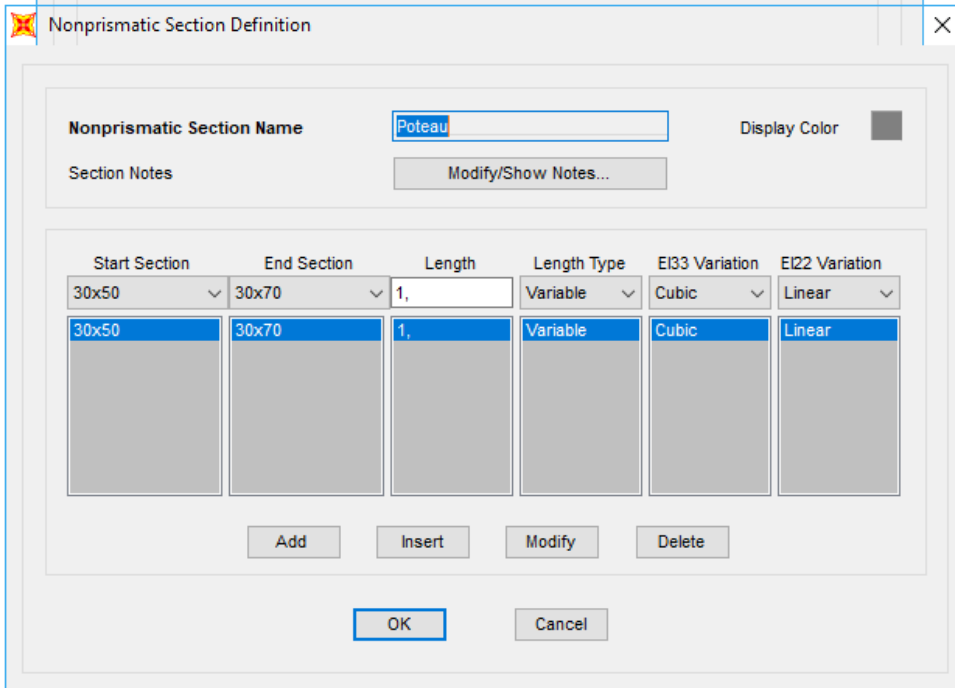
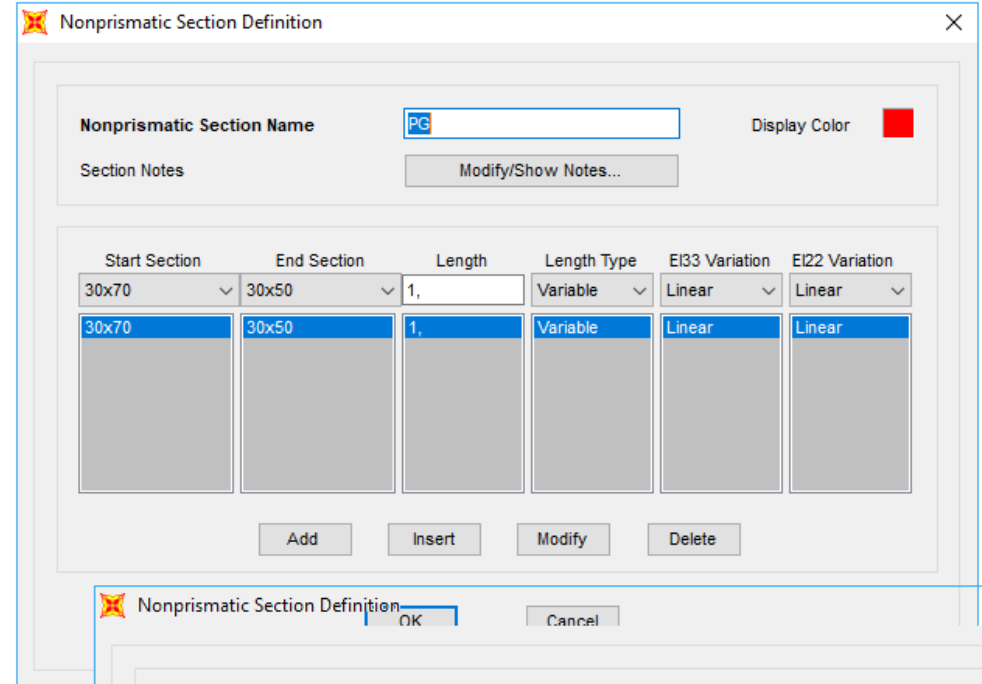
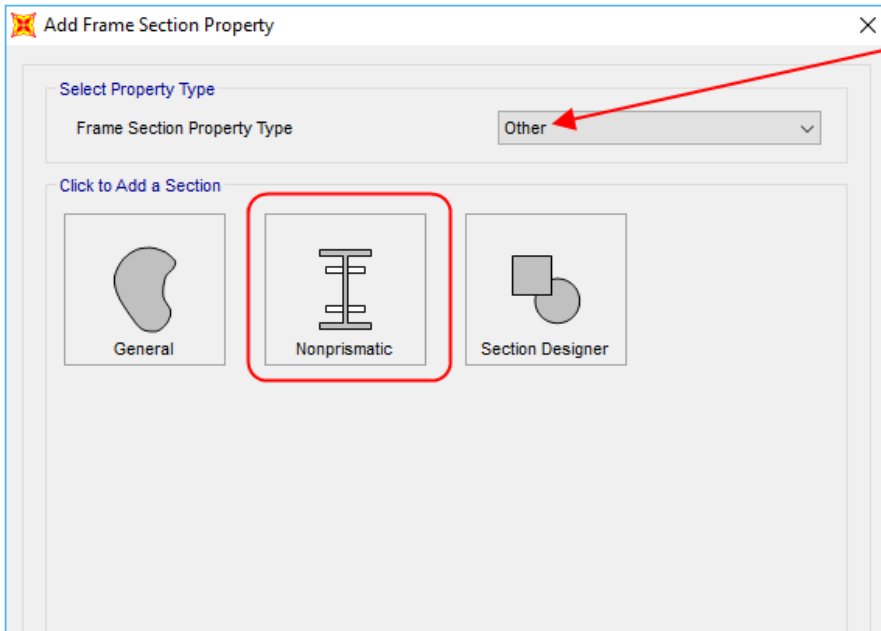


Properties

Material

Property Modifiers

Creation des sections variables



The screenshot shows the SAP2000 software interface. The 'Assign' menu is open, and the 'Frame Sections...' option is selected. The 'Assign Frame Sections' dialog box is open, showing a list of section names with 'Poteau' selected. Below the list are 'Nonprismatic Section Assignment Parameters' with radio buttons for 'Default Parameters' and 'Advanced User Specified Parameters'. At the bottom of the dialog are 'Define Sections...', 'OK', 'Close', and 'Apply' buttons. A red arrow points from the text 'Assign -> Frame -> Frame section' to the 'Frame Sections...' option in the menu. A blue dashed line connects the 'Define Sections...' button in the dialog to a coordinate system diagram showing X and Z axes.

Assigner les sections variables:

1-Selection des elements

2-Assign → Frame → Frame section

SAP2000 v19.0.0 Ultimate 64-bit - (Untitled)

File Edit View Define Draw Select **Assign** Analyze Display Design Options Tools Help

Joint

- Frame
 - Frame Sections...
 - Property Modifiers...
 - Material Property Overwrites...
 - Releases/Partial Fixity...
 - Local Axes...
 - Reverse Connectivity...
 - End (Length) Offsets...
 - Insertion Point...**
 - Output Stations...
 - P-Delta Force...
 - Path...
 - Tension/Compression Limits...
 - Hinges...
 - Hinge Overwrites...
 - Line Springs...
 - Line Mass...
 - Material Temperatures...
 - Automatic Frame Mesh...
 - Load Transfer Options...
- Cable
- Tendon
- Area
- Solid
- Link/Support
- Joint Loads
- Frame Loads
- Cable Loads
- Tendon Loads
- Area Loads
- Solid Loads
- Link/Support Loads
- Joint Patterns...
- Assign to Group... Ctrl+Shift+G
- Update All Generated Hinge Properties
- Clear Display of Assigns
- Copy Assigns
- Paste Assigns

Frame Insertion Points

1-Selection par element.
2-Assign → Frame → insertion point

Assign Frame Insertion Point

Cardinal Point
 Cardinal Point: 10 (Centroid)

Mirror about Local 2 Axis
 Mirror about Local 3 Axis

Frame Joint Offsets to Cardinal Point
 Coordinate System: GLOBAL

	End-I	End-J
Global X	0 m	0,1 m
Global Y	0 m	0 m
Global Z	0 m	0 m

Stiffness Transformation
 Do Not Transform Frame Stiffness for Offsets from Centroid

Reset Form to Default Values

OK Close Apply

Assign Frame Insertion Point

Cardinal Point
 Cardinal Point: 10 (Centroid)

Mirror about Local 2 Axis
 Mirror about Local 3 Axis

Frame Joint Offsets to Cardinal Point
 Coordinate System: GLOBAL

	End-I	End-J
Global X	0 m	0 m
Global Y	0 m	0 m
Global Z	-0,1 m	0 m

Stiffness Transformation
 Do Not Transform Frame Stiffness for Offsets from Centroid

Reset Form to Default Values

OK Close Apply

Assign Frame Insertion Point

Cardinal Point
 Cardinal Point: 10 (Centroid)

Mirror about Local 2 Axis
 Mirror about Local 3 Axis

Frame Joint Offsets to Cardinal Point
 Coordinate System: GLOBAL

	End-I	End-J
Global X	0 m	-0,1 m
Global Y	0 m	0 m
Global Z	0 m	0 m

Stiffness Transformation
 Do Not Transform Frame Stiffness for Offsets from Centroid

Reset Form to Default Values

OK Close Apply

Assign Frame Insertion Point

Cardinal Point
 Cardinal Point: 10 (Centroid)

Mirror about Local 2 Axis
 Mirror about Local 3 Axis

Frame Joint Offsets to Cardinal Point
 Coordinate System: GLOBAL

	End-I	End-J
Global X	0 m	0 m
Global Y	0 m	0 m
Global Z	0 m	-0,1 m

Stiffness Transformation
 Do Not Transform Frame Stiffness for Offsets from Centroid

Reset Form to Default Values

OK Close Apply

