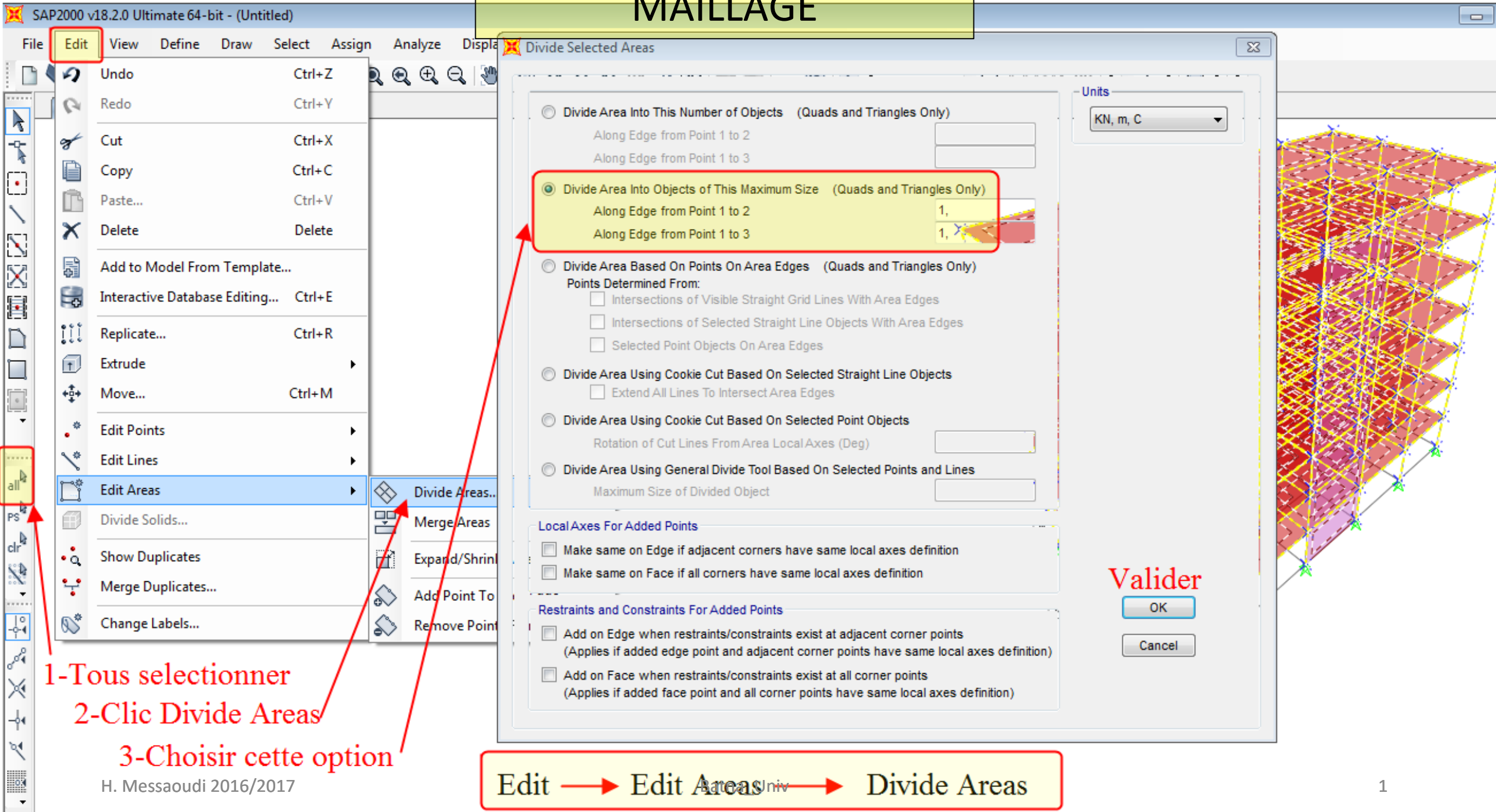
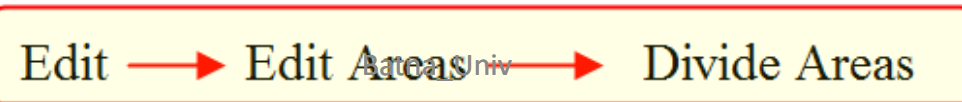
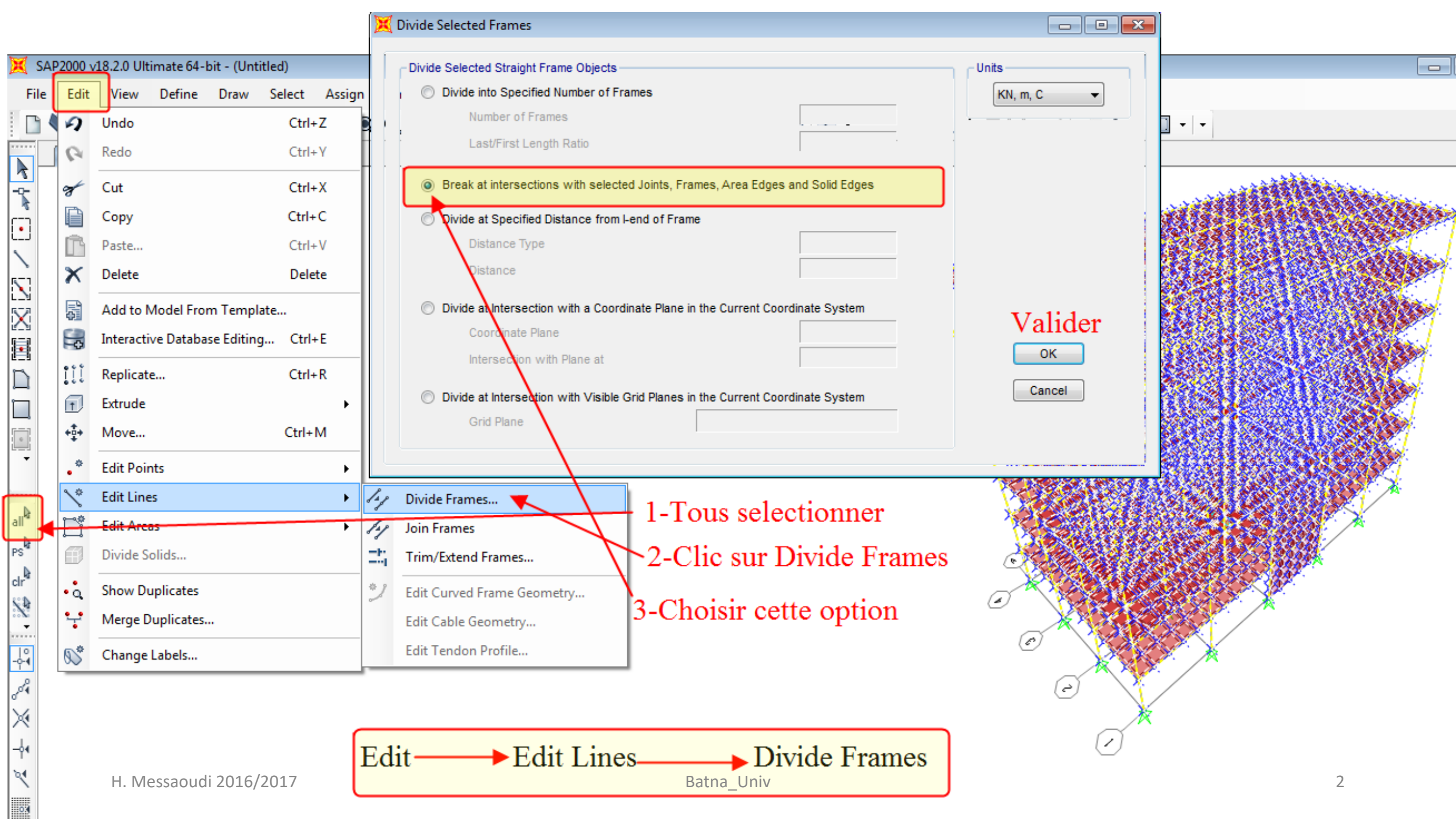


# MAILLAGE



- 1-Tous sélectionner
- 2-Clic Divide Areas
- 3-Choisir cette option





**Divide Selected Frames**

Divide Selected Straight Frame Objects

Divide into Specified Number of Frames  
Number of Frames:   
Last/First Length Ratio:

Break at intersections with selected Joints, Frames, Area Edges and Solid Edges

Divide at Specified Distance from I-end of Frame  
Distance Type:   
Distance:

Divide at Intersection with a Coordinate Plane in the Current Coordinate System  
Coordinate Plane:   
Intersection with Plane at:

Divide at Intersection with Visible Grid Planes in the Current Coordinate System  
Grid Plane:

Units: KN, m, C

**Valider**

OK Cancel

SAP2000 v18.2.0 Ultimate 64-bit - (Untitled)

File **Edit** View Define Draw Select Assign

Undo Ctrl+Z  
Redo Ctrl+Y  
Cut Ctrl+X  
Copy Ctrl+C  
Paste... Ctrl+V  
Delete Delete

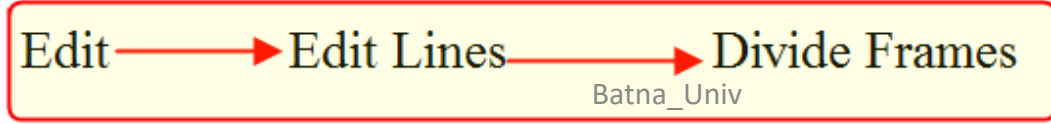
Add to Model From Template...  
Interactive Database Editing... Ctrl+E  
Replicate... Ctrl+R  
Extrude  
Move... Ctrl+M

Edit Points

**Edit Lines**  
Edit Areas  
Divide Solids...  
Show Duplicates  
Merge Duplicates...  
Change Labels...

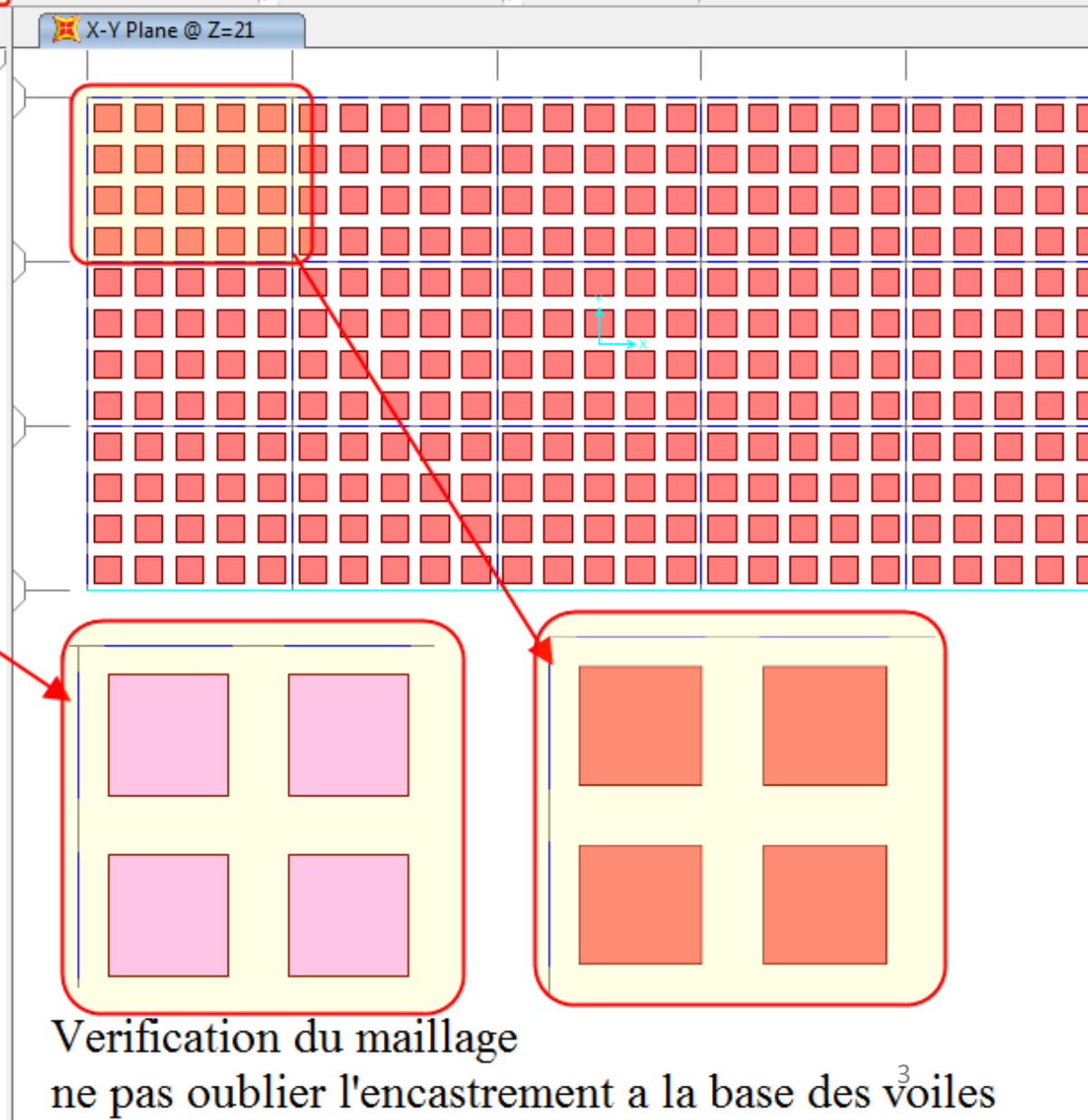
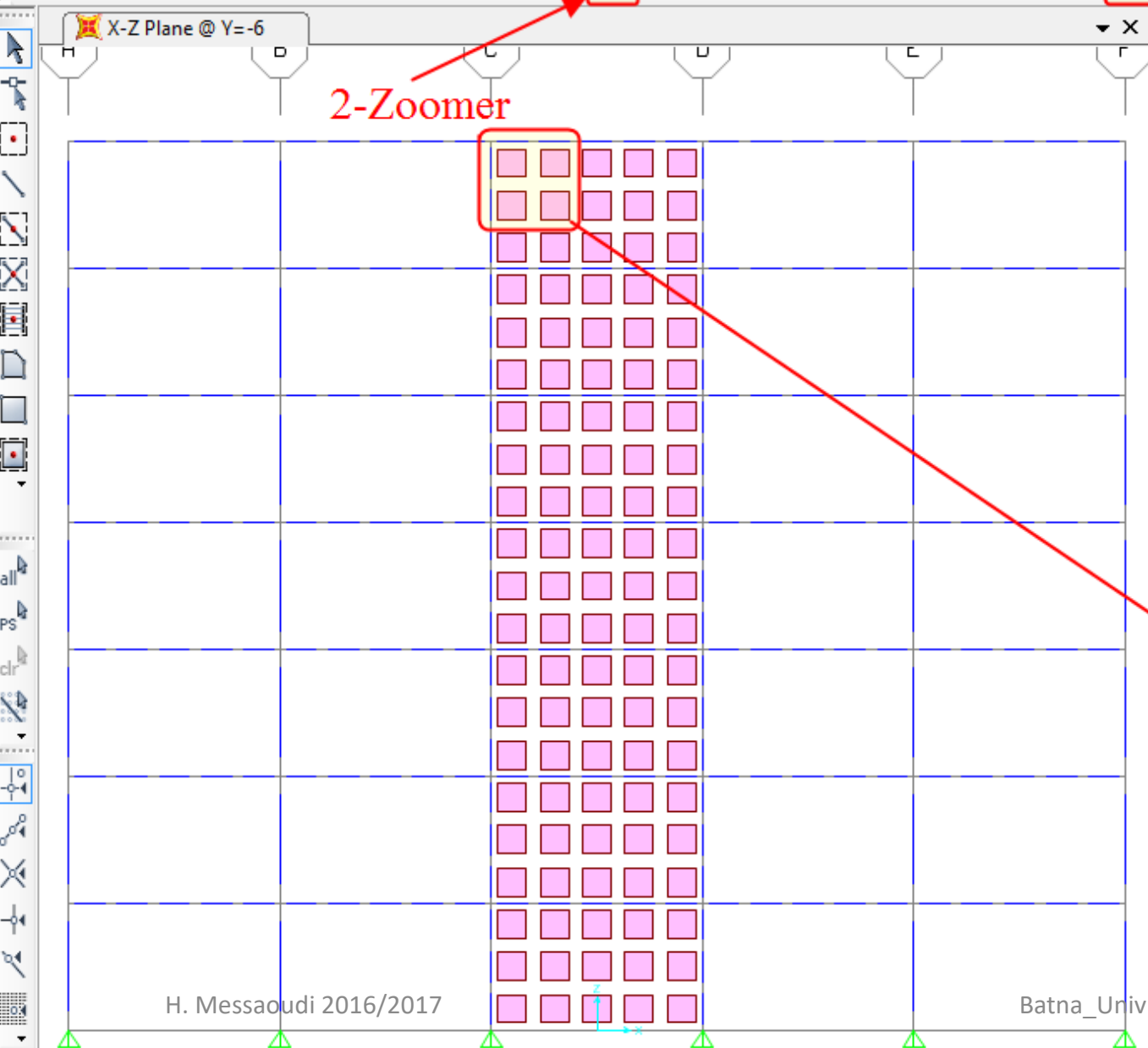
**Divide Frames...**  
Join Frames  
Trim/Extend Frames...  
Edit Curved Frame Geometry...  
Edit Cable Geometry...  
Edit Tendon Profile...

- 1-Tous selectionner
- 2-Clic sur Divide Frames
- 3-Choisir cette option



1-Cliquer ici

2-Zoomer



Verification du maillage  
ne pas oublier l'encastrement a la base des voiles