

**Télécharger des images Landsat  
gratuitement depuis le site:**

**Earthexplorer**

**<https://earthexplorer.usgs.gov>**

Ajouter votre premier favori en utilisant le cœur dans la barre d'adresse ou [Importer des favoris maintenant](#)

Google earth explorer

Connexion

Tous Vidéos Images Maps Livres Plus Paramètres Outils

Environ 4 280 000 résultats (0,42 secondes)

### EarthExplorer

<https://earthexplorer.usgs.gov/> Traduire cette page  
Query and order satellite images, aerial photographs, and cartographic products through the U.S. Geological Survey.

#### USGS Earth Explorer

Earth Explorer Distribution Download.  
The EarthExplorer ...

[Autres résultats sur usgs.gov »](#)

#### Earth Explorer Tutorial

Document History. Number Date and  
Sections. Notes. 1 ...

### Afficher les résultats pour

[USGS EarthExplorer \(Site web\)](#)

Propriétaire : Institut d'études géologiques des États-Unis



[Earth Explorer \(Parc à thèmes\)](#)

Type de parc : Musée scientifique; Parc à thèmes couvert

Date d'ouverture : mai 2004



### USGS Earth Explorer: Download Free Landsat Imagery - GIS Geography

<https://gisgeography.com> Data Sources Traduire cette page  
15 févr. 2018 - The USGS Earth Explorer is quick and easy to download free Landsat imagery & other remote sensing data. Enter ROI, define timeline and download for free.

### Télécharger Earth Explorer pour Windows : téléchargement gratuit !

[www.clubic.com](http://www.clubic.com) Windows Education et Sciences Histoire et Géographie  
★★★★★ Note : 5 - 7 votes  
7 mars 2008 - Earth Explorer intègre des images satellite de haute résolution avec les frontières politiques, les littoraux, les fleuves, 267 pays et régions, 40000 villes rangées, 15000 îles et 1700 tremblements de terre historiques remarquables depuis 1980 dans un globe fantastique de la terre en trois dimensions (3D).

<https://translate.google.com/translate?hl=fr&sl=en&u=https://earthexplorer.usgs.gov/&prev=search>

Ajouter votre premier favori en utilisant le cœur dans la barre d'adresse ou [Importer des favoris maintenant](#)



### 1. Enter Search Criteria

To narrow your search area: type in an address or place name, enter coordinates or click the map to define your search area (for advanced map tools, view the [help documentation](#)), and/or choose a date range.

Address/Place Path/Row Feature Circle  
  
Show Clear

Coordinates Predefined Area Shapefile KML  
Degree/Minute/Second Decimal  
No coordinates selected.  
Use Map Add Coordinate Clear Coordinates

Date Range Result Options  
Search from: mm/dd/yyyy to: mm/dd/yyyy  
Search months: (all)

### Search Criteria Summary (Show) Clear Criteria



Ajouter votre premier favori en utilisant le cœur dans la barre d'adresse ou [Importer des favoris maintenant](#)



## EROS Registration System (ERS)

ERS consolidates user profile and authentication for all EROS web services into a single independent application.

### Sign In

sign in with your existing USGS registered username and password

[forgot password?](#)

Don't have an account?

OMB number 1028-0119  
OMB expiration date 06/30/2019

*Privacy and Paperwork Reduction Act statements: 16 U.S.C. 1a7 authorized collection of this information. This information will be used by the U.S. Geological Survey to better serve the public. Response to this request is voluntary. No action may be taken against you for refusing to supply the information requested. The time required to complete this information collection is estimated to average 5 minutes per response. We will not distribute responses associated with you as an individual. We ask you for some basic organizational and contact information to help us interpret the results and, if needed, to contact you for clarification. Comments on this collection should be sent to [custserv@usgs.gov](mailto:custserv@usgs.gov).*

Ajouter votre premier favori en utilisant le cœur dans la barre d'adresse ou [Importer des favoris maintenant](#)



**Search Criteria** | Data Sets | Additional Criteria | Results

### 1. Enter Search Criteria

To narrow your search area: type in an address or place name, enter coordinates or click the map to define your search area (for advanced map tools, view the [help documentation](#)), and/or choose a date range.

**Address/Place** | Path/Row | Feature | Circle

**Coordinates** | Predefined Area | Shapefile | KML

Degree/Minute/Second | Decimal

**No coordinates selected.**

**Date Range** | Result Options

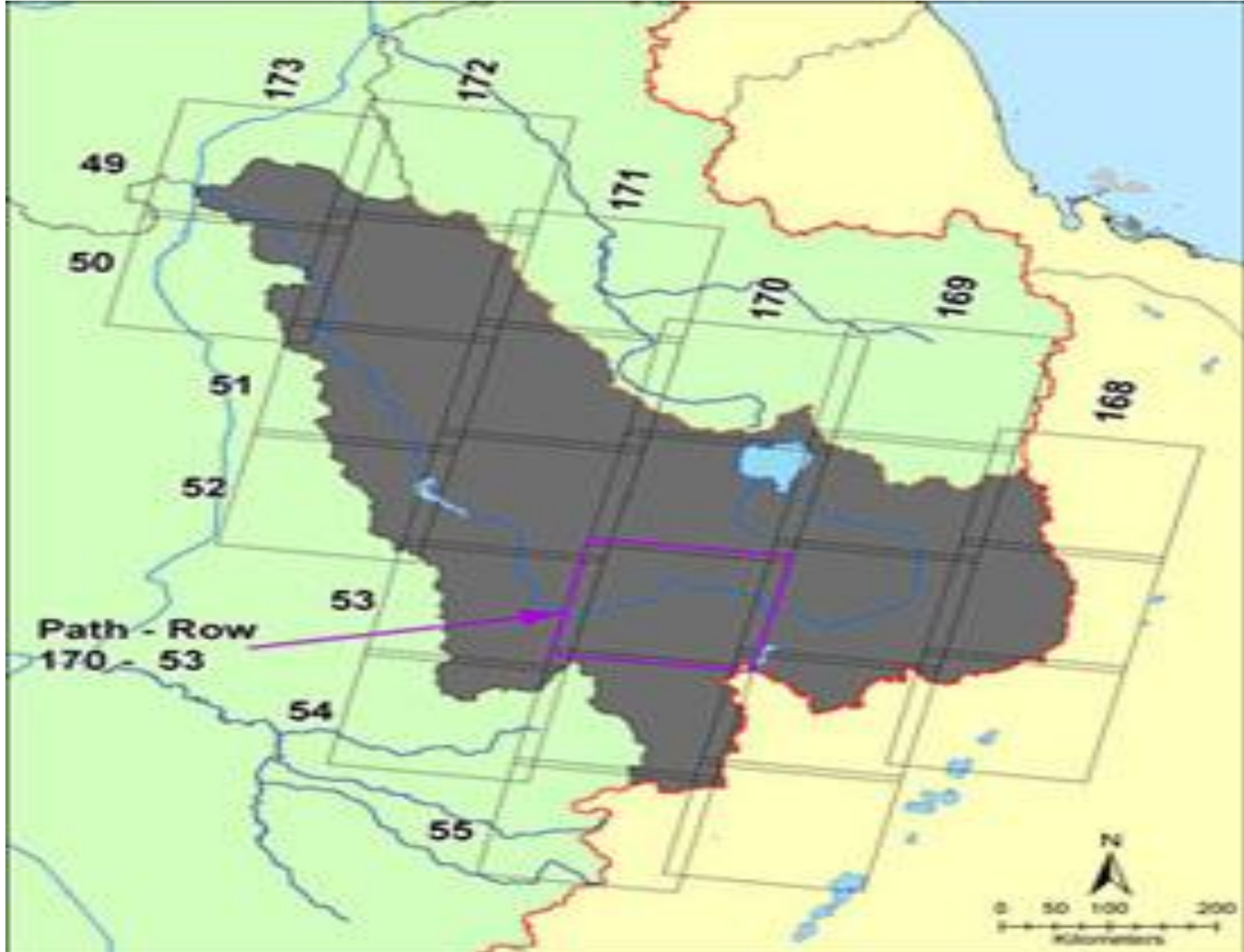
Search from: mm/dd/yyyy to: mm/dd/yyyy

Search months: (all)

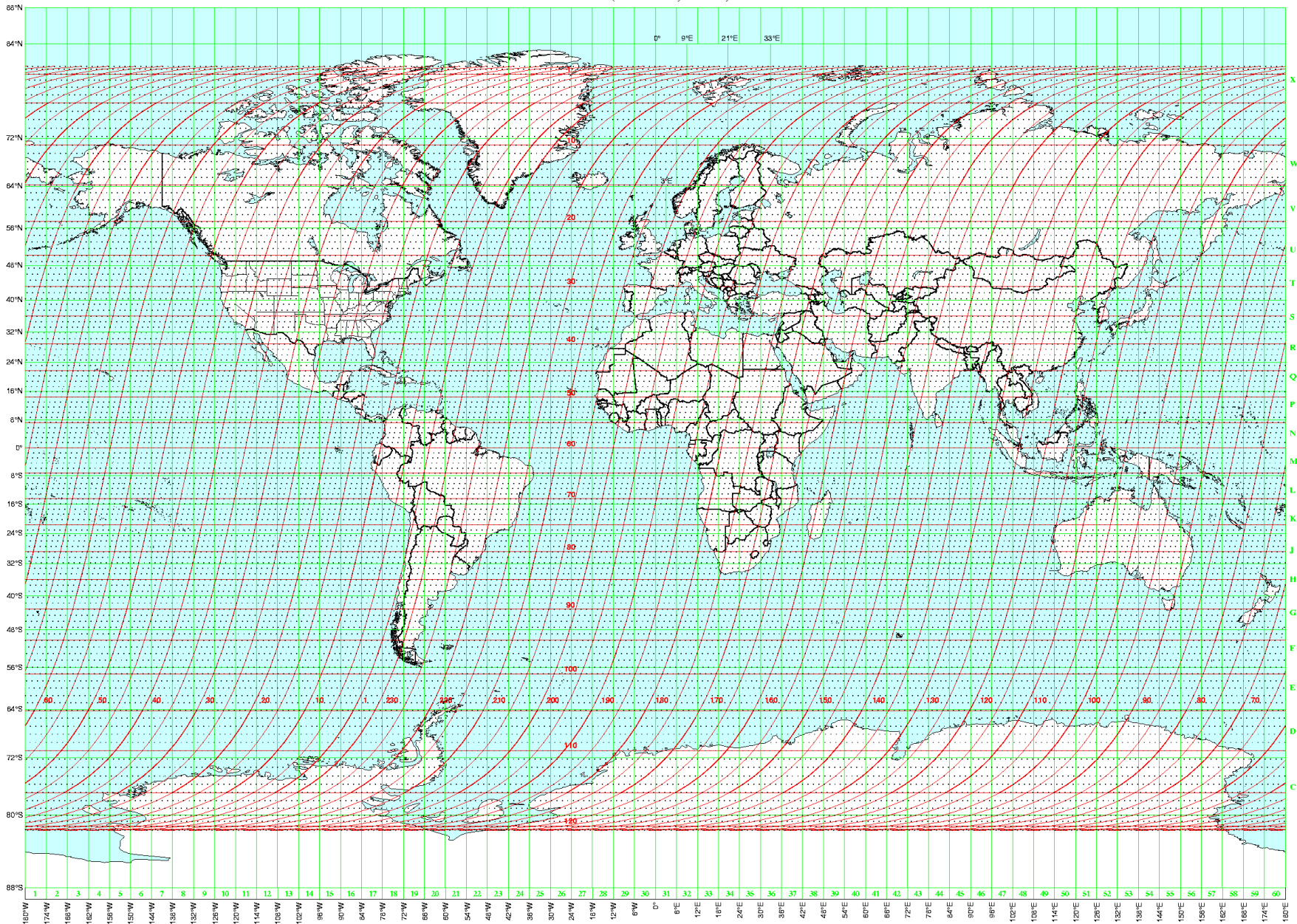
### Search Criteria Summary (Show) Clear Criteria

Plan | Satellite

(59° 42' 43" N, 132° 00' 42" W) Options | Overlays



WRS-2 Path / Row (Landsats 4, 5 and 7) and UTM Zones



WRS-2 Path / Row — Black dots — Intermediate Path / Row  
 UTM Zones — Miller cylindrical projection

U.S. Geological Survey  
 National Mapping Division  
 EROS Data Center  
 Sioux Falls, SD